

Kilmarnock YMCA

Community Café



Today's Agenda

1

About Kilmarnock YMCA

3

Development of the café

2

Support from the funder

4

Impact on the community



All about Kilmarnock



Volunteers

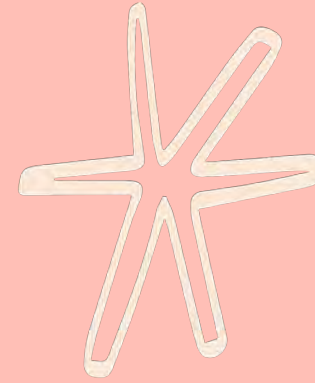


**Youth Club
Over 50s
group**
COMMUNITY GARDEN AND
CAFÉ



Kilmarnock YMCA is a
Youth Work and
Community charity
providing a needs led
service to the community
since 1904

Support from the funder



Thanks to our funding officer Sharon we have had a lot of support when things have gone wrong or we have needed some advice or extra help!



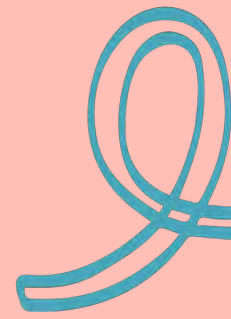
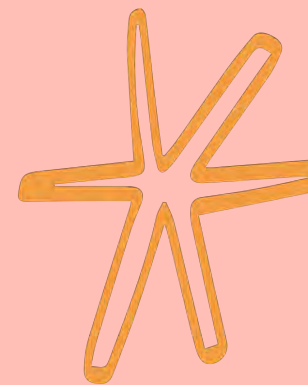
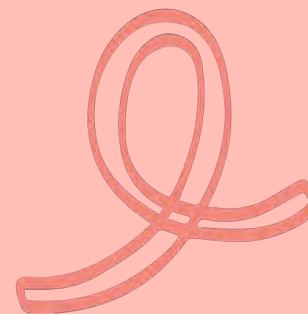
Delayed building work



Broken Boiler



Reassurance, guidance and support



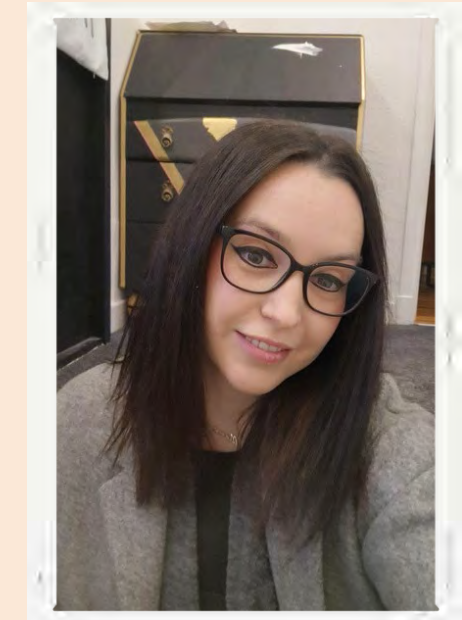
Supporting the journey

Thanks to the Place based investment fund we have been able to secure further funding to support us on our journey to have the best community café and to grow our organisation to support the needs of the community

New manager for the organisation



Funding for a café manager



Electric Van



Match funding from other organisations

Renewable Energy Fund
Robertson Trust

CLOTHWORKERS

Development of the Community Café

The community café required more than just building work for it to become a reality!

Creating a positive environment

Community consultation

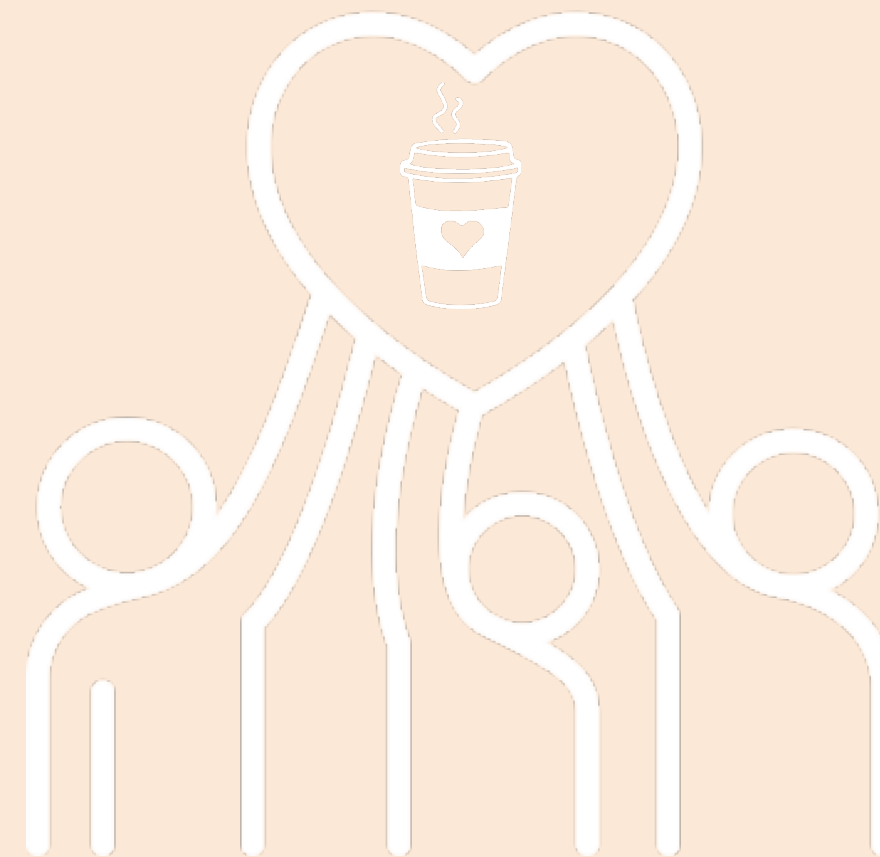
Design choices to make the space feel open, welcoming and inclusive to all

Sourcing volunteers and employees through places such as the job centre and SL33

Impact on the community

INCREASE
EMPLOYMENT
OPPORTUNITIES

OPPORTUNITIES
TO EAT GOOD
HEALTHY FOOD
AT LOW COST



WARM,
WELCOME
AND
INCLUSIVE
SPACE

SPACE AND
PLACE FOR
PEOPLE TO
CONNECT



Thank you

taylor@kilmarnockymca.com