

# **Northern Locality Action Plan**

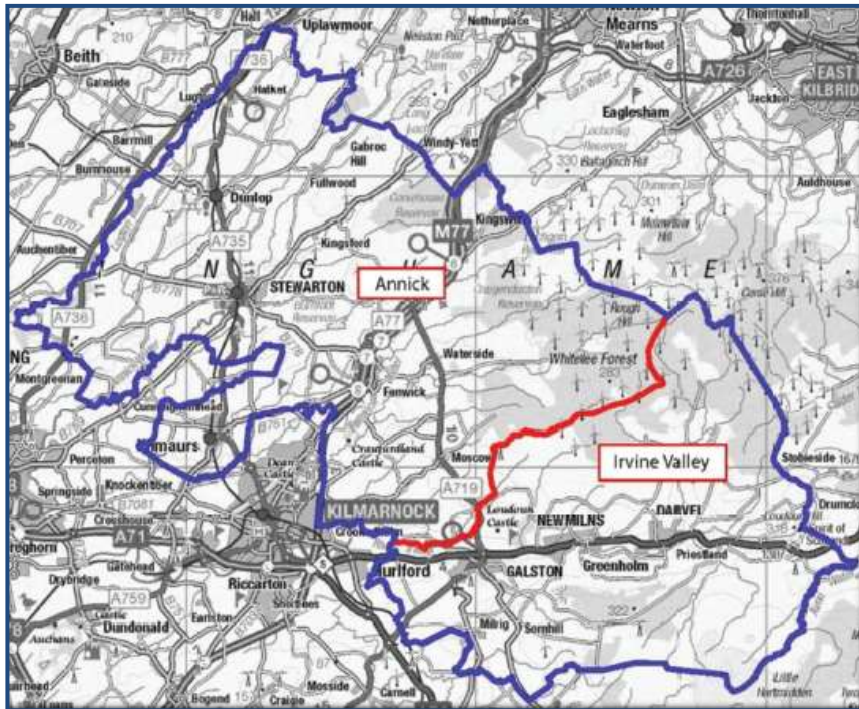
**2018-2019**

## Introduction

Welcome to the plan for East Ayrshire’s Northern Locality (“the Locality Plan”).

This is our first Northern Locality Plan; it sets out our shared priorities for improving health and wellbeing in Annick and Irvine Valley and identifies actions to be carried out in 2018-19 to help achieve positive outcomes in these communities.

## Map of Northern Locality



Northern Locality Settlements	
Annick	Irvine Valley
Stewarton	Galston
Kilmaurs	Newmilns
Dunlop	Darvel
Fenwick	Greenholm
Waterside	Priestland
Moscow	Sornhill
Kingswell	Milrig
Kingsford	
Fullwood	
Halket	
Lugton	

Successfully delivering the Locality Plan contributes to achieving:

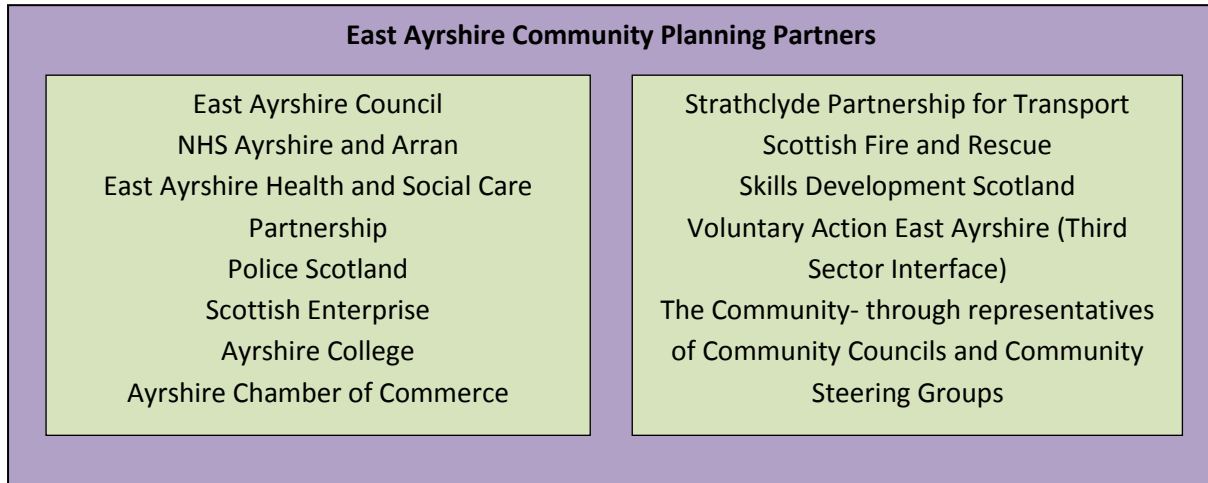
- the Community Plan: [Wellbeing Delivery Plan 2018-21](#);
- the [Local Outcome Improvement Plan 2018-2021](#);
- the Integration Joint Board’s [Strategic Plan](#);
- the [Local Police Plan 2017-20](#)
- the [Local Fire and Rescue Plan for East Ayrshire 2017](#)

These documents set out the strategic context and direction in detail and there is no requirement for Locality Plan to repeat this information.

## East Ayrshire

We know that planning and working together in localities will help our communities improve.

At a strategic level, working in localities means having a co-ordinated approach to how different agencies work together on a geographical basis. These Partners are highlighted below:



Operationally, localities are the setting for employees from all these agencies, together with primary care contractors and other community partners to make decisions to deliver service improvements and to influence how resources are targeted for local priorities.

There are three Locality Groups, which meet regularly for this purpose:

- Northern Locality Group: covering Annick and the Irvine Valley;
- Kilmarnock Locality Group: covering Kilmarnock, including Crosshouse and Hurlford; and
- Southern Locality Group: covering Ballochmyle, Cumnock and Doon Valley.

Locality Groups influence local decisions and resources in a number of ways including; via the HSCP's Strategic Planning Group, the Community Planning Partnership's Executive Group and in the use of [participatory budgeting](#).

## Northern Locality

### Our Vision is that:

“Our communities, through Locality Planning Groups, are key participants in designing and delivering initiatives that achieve improvements for their health and wellbeing.”

## Needs

We know much about the needs and characteristics of the Northern Locality. The infographics below display information in relation to: population, economy & skills, safer communities and wellbeing.



Full details can be found in the published [Needs Assessment](#).

## Priorities

We have talked to people in our communities about what is important to them and a number of priority areas have emerged:

<p>Affordable, accessible public transport (Irvine Valley)</p> <p>Reduce drug and alcohol problems</p> <p>Reduce isolation in communities</p>	<p>Greater focus on prevention and early intervention</p> <p>Joined-up holistic approach involving partners</p> <p>More jobs to reduce poverty</p> <p>Better information and communication about services in our communities</p>
---	--

We will focus on a number of these in our first planning period and these are set out in detail in our Action Plan below.

## Assets

We know that communities have a vast range of strengths and resources that naturally support people to improve their health and wellbeing.

These can be anything from community spirit, to organisations and groups active in the area, to facilities and places to meet. Community Planning Partner organisations and the third and independent sectors then add to the assets available in a community such as; Vibrant Communities outings, classes and exercise programmes, Community Connectors working in GP practices and physical activity programmes for older people who live in care homes.

All of these combined are the tools and resources the locality has at its disposal to tackle issues and create improvements. Our Plan is based on either identifying gaps in the locality's toolbox and filling them, or building on things that are already in place.

## Local Participation and Engagement

People having a say about their priorities for improving their health and wellbeing and their community is at the heart of everything we do. Engaging with local groups and networks is a continuous part of working together in localities.

Through delivery of our Action Plan, we will co-ordinate and drive health and wellbeing improvements in the communities that make up the Kilmarnock Locality. All residents who live in the Kilmarnock Locality are encouraged to engage with the plan, get involved in its activities and share it with as many people as possible, especially people working and living in Kilmarnock North, Kilmarnock South, Kilmarnock East and Hurlford and Kilmarnock West and Crosshouse. Ballochmyle.

If you would like to be more involved, or would like more information, please contact us on: [healthandsocialcareadmin@east-ayrshire.gov.uk](mailto:healthandsocialcareadmin@east-ayrshire.gov.uk)

You can also phone us on 01563 576000 asking for the Health and Social Care Partnership admin team, or by Textphone: 01563 576167.

# CO-PRODUCTION IN EAST AYRSHIRE



## Northern Locality Action Plan Year 1 – April 2018 – March 2019

1.0 Social Isolation and Loneliness					
Priority	Action	Desired Outcome	Locality	Timescale	Progress update
<p>Social isolation and loneliness remain key issues. There is a lack of a co-ordinated approach and strategic direction in relation to this.</p> <p>This is an issue across all age groups and this must be recognised.</p>	Develop a co-ordinated approach to effectively tackle Social Isolation and Loneliness in the Northern locality.	Co-ordinated approach to identify people experiencing social isolation and loneliness and set up signposting system to ensure people can access a range of support within communities.		March 2019	
	Build on Community Connectors referral and signposting process and other community networks to provide informal support.				
	Undertake an exercise to help identify specific groups/communities at risk of or currently experiencing social isolation and loneliness				
2.0 Transport					
Priority	Action	Desired Outcome	Locality	Timescale	Progress update
Availability and accessibility of good quality transport links in the Irvine Valley area.	Map current transport models including train and bus services, community volunteer based transport service, My Bus and other forms of transport.	Better information about local transport available, cost of transport and alternative methods of transport.		March 2019	
3.0 Information and Communication – My East Ayrshire					
Priority	Action	Desired Outcome	Locality	Timescale	Progress update
My East Ayrshire - information on resources is not always current and it is difficult to establish what is relevant and what is out of date.	Identify key stakeholder to review and update of this resource.	Availability of a current local information system to provide resources to people in East Ayrshire.		March 2019	

<b>4.0 Review membership of Locality Planning Groups</b>					
<i>Priority</i>	<i>Action</i>	<i>Desired Outcome</i>	<i>Locality</i>	<i>Timescale</i>	<i>Progress update</i>
Membership of the Locality Planning Group is not fully formed.	Group to consider and review membership, identify gaps and develop an approach to ensure that membership reflects members that can take forward and implement actions.	Group membership is representative of communities and can ensure that the Locality Planning Group can respond effectively to issues raised.		June 2018	
<b>5.0 Employability</b>					
<i>Priority</i>	<i>Action</i>	<i>Desired Outcome</i>	<i>Locality</i>	<i>Timescale</i>	<i>Progress update</i>
Employability and employment opportunities. Irvine Valley	Improve access to employability.	More access to employment and employment opportunities. THIS IS LINKED TO TRANSPORT			
<b>6.0 Co-production</b>					
<i>Priority</i>	<i>Action</i>	<i>Desired Outcome</i>	<i>Locality</i>	<i>Timescale</i>	<i>Progress update</i>
Work in a co-produced way to tackle all issues raised.	Embed co-produced approach in the work of the group. Follow up Co-production session	Continued commitment to working in a co-produced way.		October 2018	
<b>7.0 Review Participatory Budgeting Process</b>					
<i>Priority</i>	<i>Action</i>	<i>Desired Outcome</i>	<i>Locality</i>	<i>Timescale</i>	<i>Progress update</i>
PB process was rushed and had to be auctioned in a very tight timescale.	Debrief of process undertaken in March 2018. Review and develop a protocol on how to take forward any future PB opportunities.	A more structured approach.		October 2018	
<b>8.0 Early Intervention &amp; Prevention</b>					
<i>Priority</i>	<i>Action</i>	<i>Desired Outcome</i>	<i>Locality</i>	<i>Timescale</i>	<i>Progress update</i>
To focus preventative services to address inequalities	Build relationships between existing services to encourage partnership working which enhances the reach of partners services in a targeted manner	<ul style="list-style-type: none"> <li>Improved engagement with and delivery of services to the most vulnerable</li> <li>Reduced prevalence of smoking</li> <li>Improved mental health and wellbeing</li> </ul>		March 2019	