

East Ayrshire Council

# **A Guide to Early Learning and Childcare 2025-26**

*including the Allocation Policy*



East Ayrshire Council  
Comhairle Siorrachd Àir an Ear

# Contents

|   |    |
|---|----|
| <b>Introduction</b>   | 3  |
| <b>Entitlement, Funding Follows the Child and the National Standard</b> | 4  |
| <b>Making an Application for an Early Learning and Childcare Place</b>  | 5  |
| When and where do I make application for a place?                       | 5  |
| What early learning and childcare is available?                         | 5  |
| Can I apply for a place in any ECC or Funded Provider (FP)?             | 5  |
| <b>Models of Early Learning and Childcare</b>                           | 7  |
| Childminders  | 7  |
| Blended Model – Childminders  | 7  |
| Split Placement between 2 ELC Settings                                  | 7  |
| <b>Cross Boundary places</b>  | 8  |
| <b>Ballot</b>   | 10 |
| <b>Early Learning and Childcare Allocations Policy</b>                  | 11 |
| <b>Local Authority Centres</b>  | 13 |
| <b>Funded ELC Providers</b>   | 17 |
| <b>Childminders</b>   | 18 |
| <b>Useful Contacts</b>  | 21 |



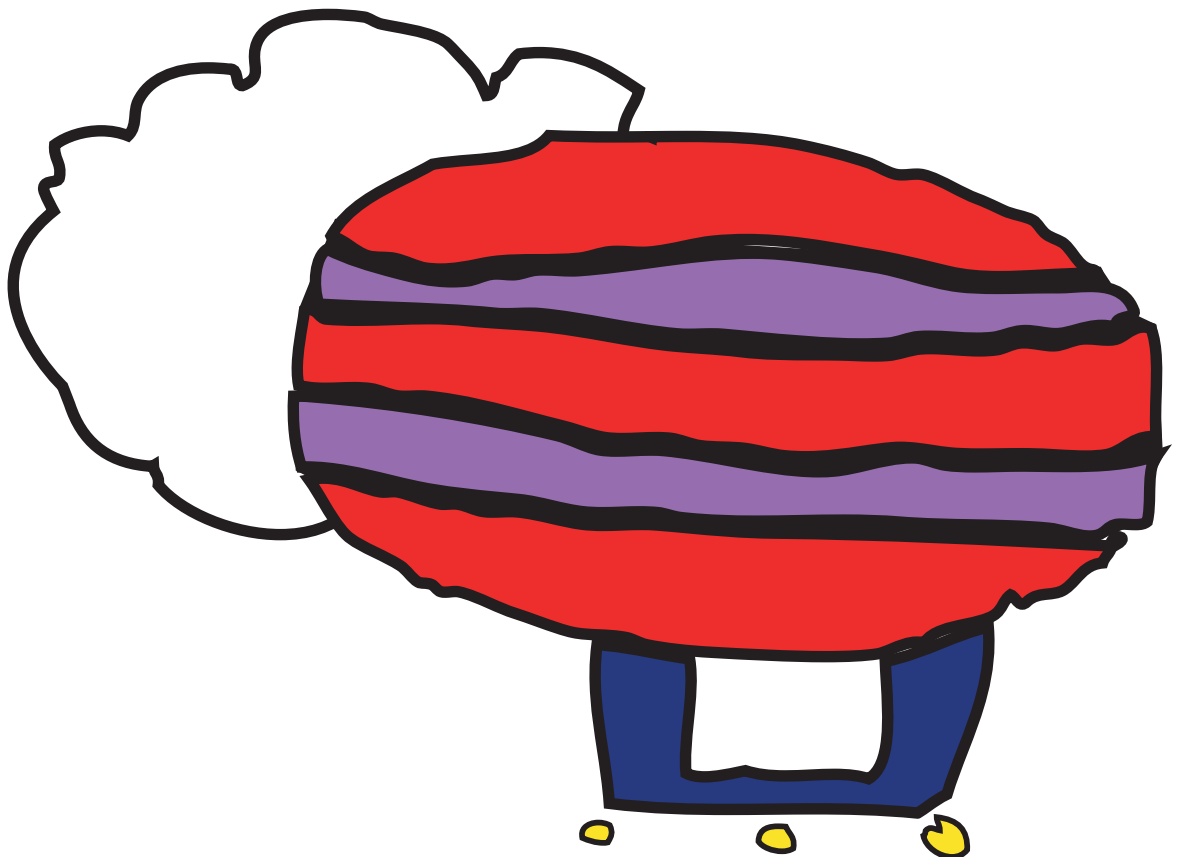
# Introduction

Early learning and childcare (ELC) is an important stage in a child's development and helps children to learn through play. A high quality early learning and childcare experience builds on the valuable learning that takes place in and around the home and also promotes the development of other essential skills that they will rely on in later life. Children greatly enjoy and benefit from playing and sharing their learning with other children.

Early childhood centres and funded ELC providers are staffed by practitioners skilled in responding to children's needs and interests in a nurturing, caring and child friendly environment.

Learning experiences, which are developmentally appropriate, provide children with opportunities to be creative and curious, to explore, experiment and pursue their interests, to communicate, collaborate and forge friendships which can last a lifetime.

All providers of government funded early learning and childcare are currently inspected by the Care Inspectorate and Education Scotland. Practitioners follow national guidelines for the learning and care of children aged 0-5 years that encourage learning through play.



# Entitlement, Funding Follows the Child and the National Standard

All 3 & 4-year olds and eligible 2-year olds have access to up to 1140 hours of funded early learning and childcare.

That means 30 hours per week Monday to Friday during school term time or around 23 hours a week if taken across a calendar year.

The "Funding Follows the Child" approach ensures that the funded entitlement is delivered in high quality settings that meet the National Standard for Early Learning and Childcare (ELC). At the heart of the Standard is a clear and consistent set of quality criteria, to ensure that all settings which offer the funded entitlement are delivering the highest quality early learning and childcare experience.

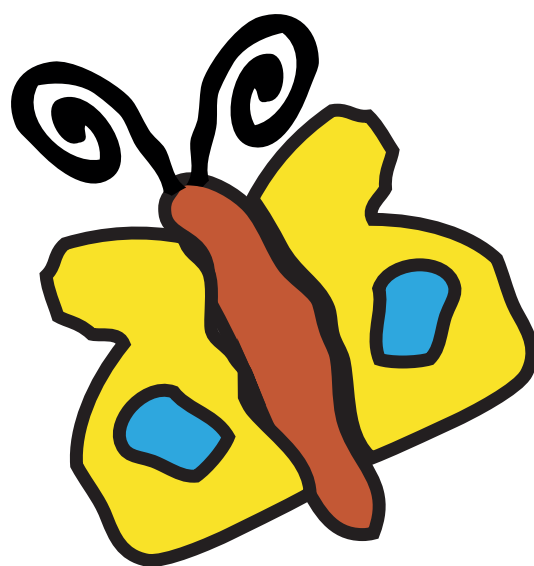
Providers who meet the National Standard for ELC, have contracted with a local authority and have a space available can offer your child a funded place. Providers can include:

- Registered childminders
- Private or voluntary sector nurseries
- Early childhood centres and nurseries

Information on the National Standard can be found [here](#)

Funded early learning and childcare is an entitlement for children and attendance is not compulsory.

If you are seeking a pattern of hours for your child, which is less than 1140 hours, please discuss this with the Head of Centre/Head Teacher, Depute Manager or Senior Lead early learning and childcare practitioner.



# Making an Application for an Early Learning and Childcare Place

## When and where do I make application for a place?

Information on application dates, the ELC Parent Guide and the online application form is published on the [Council's website](#) and on the Council's twitter and Facebook pages. This guide sets out the Council's Policy for the allocation of Early Learning and Childcare places.

### [A guide to early learning and childcare.](#)

#### [When and where to apply.](#)

All places are allocated in line with the priorities outlined in this guide e.g. first priority is given to children who meet the criteria set out in Priority 1, then Priority 2 and so on.

Every effort will be made to meet your first choice of centre and preferred pattern of attendance however, this will be dependent on the number of places available and the priority given to applications.

The on-line application will be available from **14 February to 28 February 2025 – (midnight)**. It is important that you make application by **28 February 2025** noting your first choice of centre. You should also identify your second choice of centre and preferred pattern of attendance on the application form as there may be occasions when you cannot access a place in your first choice of centre. Applications which do not indicate a second choice may not be considered.

If you wish to apply for a split session place you will need to make an online application for each centre.

Applications received after **28 February 2025** will be allocated in a second phase before or at the start of the new term in August 2024.

When completing the application, parents and carers should note any issues which may affect their child e.g. toileting, any special dietary requirements or medical issues. This is to enable appropriate planning to take place and will not affect their child's access to a place.

## What early learning and childcare is available?

There are 36 early childhood centres (ECCs) in East Ayrshire – 12 standalone ECCs and 24 in primary schools. In addition, the Council has a contract with private and voluntary sector nurseries, known as funded ELC providers and childminders who have met the National Standard for ELC to deliver funded places.

Please see pages **13-20** for a full list of ECCs, funded ELC providers, childminders and the 4 models of delivery from August 2025.

If you do not know where your nearest early childhood centre or funded ELC provider is, you can email Education - [EarlyYearsAdmissions@east-ayrshire.gov.uk](mailto:EarlyYearsAdmissions@east-ayrshire.gov.uk)

## Can I apply for a place in any ECC or Funded Provider (FP)?

Yes, however defined geographic areas apply to early childhood centres and funded ELC providers offering up to 1140 hours.

Children who reside outwith East Ayrshire and who are cared for by a childminder and/or relative in East Ayrshire will be considered using their home address only.

Applications that meet the criteria under Priorities 3,6 and 7 will be allocated as per the defined geographic area applied to each early learning and childcare setting as follows:

- the primary school catchment area where an ECC is located on the same campus as a primary school; or
- the primary school catchment area within which a standalone ECC or funded provider sits.

The village settlements of Sorn and Ochiltree do not have a primary school with an ECC. The geographic areas for these settlements are:

- Sorn – Catrine ECC
- Ochiltree – Auchinleck ECC

In all cases, priority will be given to children who live in postcodes defined as SIMD 1 and thereafter SIMD 2, within designated primary school catchment areas.

Ballots may need to take place in ECCs and funded providers, if there are insufficient places to meet demand, all other circumstances being equal.

Defined geographic areas do not apply to childminders as there is not an even spread of childminders across East Ayrshire who deliver all or part of the funded entitlement of up to 1140 hours.

The information you provide on the application form will help the head/manager of centre to give appropriate priority to your application. It is important that you provide full details on the form.

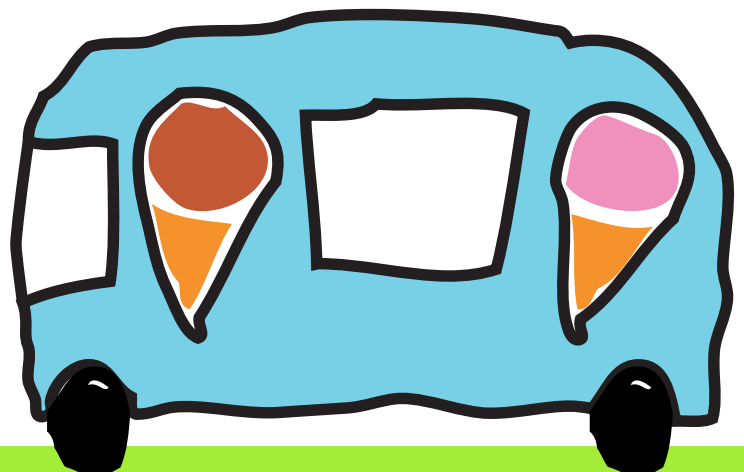
If you believe your child meets the criteria as set out in Priority 1, you will be asked on the application form to note the name of your Health Visitor or Lead Professional who will be contacted to support your application. Please note that the entitlement to funded ELC hours for eligible 3 year olds and 4 year olds is the same. If a centre is oversubscribed with applications that meet the criteria in priority 6 and a ballot is required, new applications for 4 year olds will be entered into the ballot first.

If your circumstances change, it is important that you let the head/manager of centre know so that your application can be updated. This includes any change of address, telephone number or other contact details.

Proof of the child's date of birth should be provided when you complete the application form. This must be the child's birth certificate.

Proof of the parent's residency at the time of application is also required; this must be Council Tax documentation, a bank statement or utility bill. This will be used in determining priorities for allocation of places.

All required documentation can be photographed or scanned and uploaded with the application form.



# Models of Early Learning and Childcare

In East Ayrshire, there are 4 models of delivery: term time, full year or combined early learning and childcare (ELC) packages in two settings.

- **Model 1:** up to 1140 hours across 38 weeks (30 hours term time – for example 9.00am to 3.00pm) and is available in both term time and full year services. **Please note the number of places with this pattern of hours in full year services are limited.**
- **Model 2:** up to 1140 hours - the Block model: a block is 4 hours 45 minutes across 48 weeks: a long morning 8.00am to 12.45pm or a long afternoon 1.15pm to 6.00pm. **Available in full year services only.**
- **Model 3:** up to 1140 hours across 48 weeks can be taken across two full days **9.5 hours** per day between 8.00am and 6.00pm and a half day 8.00am to 12.45pm or half day 1.15pm to 6.00pm. **Available in full year services only. Please note that the number of places with this pattern will be limited and the days must be consecutive at the beginning or the end of the week, ie Monday, Tuesday, Wednesday morning or Wednesday afternoon, Thursday, Friday**
- **Model 4:** up to 1140 hours as a Blended Model or Split placement provides a combination ELC package of time:
  - Blended model - an ECC or funded ELC provider and with a participating childminder or
  - Split placement between 2 different ELC settings i.e ECC and funded ELC provider

Using a combination of time between 2 different settings provides a flexible service that gives parents/carers the choice of early learning and childcare that fit around their family's needs. Parents/carers can also have the option to privately fund additional hours with those funded ELC providers or childminders that have capacity if their childcare needs exceed 1140 hours.

## Childminders

Childminders who are on the Council's contract framework can deliver either up to 1140 hours of ELC or blended model are noted in the guide. See pages **18-20** for the list of participating childminders.

## Blended Model – Childminders

A blended model of ELC which offers a combination of ELC with a participating registered childminder and either an early childhood centre or a funded ELC provider. For more information about the blended model, please contact East Ayrshire Community Childcare Team [communitychildcaresupport-admin@east-ayrshire.gov.uk](mailto:communitychildcaresupport-admin@east-ayrshire.gov.uk)

When applying for a blended model with a childminder, a separate application does not need to be submitted to the childminder. Parents should negotiate the split of the placement with the participating childminder and the early childhood centre or funded ELC provider.

For the 9.00am to 3.00pm pattern of hours and with a blended model; where the blend is on a daily basis (i.e some time with a participating childminder and in the ECC or funded ELC provider each day) attendance of 3 hours at the ECC and funded ELC provider is expected. This amount of time allows your child to settle in and become fully engaged in the opportunities available. Where capacity is an issue it may not be possible to accommodate every request for a blended place.

## Split Placement between 2 ELC Settings

If you wish to apply for a split placement between 2 ELC settings you should complete an online application for each ELC setting. Please ensure that you have negotiated the split pattern of attendance and note this in both applications.

The allocation of split places will be dependent on both settings being able to offer the hours requested.

Where parents/carers are seeking a change in pattern we advise early discussion with both settings and that 4 weeks notice is given to both.

# Cross Boundary places

## Can my child access early learning and childcare in another local authority?

The choice of ELC setting available to families is not restricted to their own local authority area. Please contact Education - [Early Years Service EarlyYearsAdmissions@east-ayrshire.gov](mailto:EarlyYearsService.EarlyYearsAdmissions@east-ayrshire.gov). for further information.

## Allocation of Places and Deciding Priorities

The Early Learning and Childcare Allocation Policy sets out the priority criteria for the allocation of places and patterns of hours.

Dates of birth or length of time on the register of applications does not affect priority to 4-year-old children. **Three year-old** children will be eligible for a place in the term after their third birthday according to set dates. Eligible **2 year olds** can access a place in the term after their 2nd birthday.

All places for children aged 3-4 years are allocated to early childhood centres and funded ELC providers, including childminders through a central allocation process. This ensures that all eligible children have access to a place.

## Places

The priority criteria will be applied to allocate places to ELC settings. If there are too many applications for the places available, a ballot will be required to allocate places and/or models of elc.

## Models of early learning and childcare

Once places have been allocated in an ELC setting and the demand for particular models are oversubscribed, then the Priority criteria will be applied to allocate the models and if oversubscribed within the criteria, a ballot will be required.

## Eligibility for Early Learning and Childcare Places

Eligible 3 year old and 4 year old children are entitled to up to 1140 hours of early learning and childcare according to the following dates of birth:

### 4 year olds

If your child's date of birth is on or between **1 March 2021 and the 28 February 2022**.

He/she will be eligible for a funded early learning and childcare place in **August 2025**.

### 3 year olds

If your child's date of birth is on or between **1st March 2022 and the 28 February 2023**.

He/she will be eligible for a funded place as set out in the table below.

| Children born between:                | Will be eligible from:                |
|---------------------------------------|---------------------------------------|
| 1 March 2022- 31 August 2022          | <b>August 2025</b>                    |
| 1 September 2022 - 31st December 2022 | Spring Term, start month January 2026 |
| 1st January 2023 - 28 February 2023   | Summer Term, start month April 2026   |

Places are available from the first Monday of the term after the third birthday (Tuesday if there is a public holiday). However, staggered entry dates may be required due to the number of eligible children each term. Where this applies, early childhood centres and funded providers will have 10 working days to admit all eligible children.

Children whose 3rd birthday falls on or between 1st March 2023 and the 31st August 2023 will be eligible for a place in **August 2026**.

## 2 year olds

2-year-old children who are eligible for a funded place under the Children and Young People (Scotland) Act 2014, who meet the following criteria on or after their 2nd birthday:

- looked after
- under a kinship care order
- have a parent appointed guardian
- a child of a care experienced parent

or

for those whose parent or carer meet the criteria below ,eligibility is the term after their 2nd birthday:

- Income Support
- Job Seeker's Allowance (income based)
- any income related element of Employment and Support Allowance
- Incapacity or Severe Disablement Allowance
- State Pension Credit
- support under part VI of the Immigration and Asylum Act 1999

If you receive tax credits or universal credit, then you can earn a certain amount of money and still be eligible.

If you are on Child Tax Credit:

- but not Working Tax Credit, then your earnings can be £19,995 or less
- and Working Tax Credit, then your earnings can be £9,522 a year or less

\*The income thresholds for Child Tax Credit and Working Tax Credit can change each year.

If you are on Universal Credit, then your household take-home pay can be £850 a month or less.

"Take-home pay" is the money your household receives from work after tax, National Insurance and any pension contributions have been taken off. Your award letter will tell you how much your take-home pay is for the claim period. This should be £850 or less.

A separate online application form is available for parents/carers to complete as this process confirms eligibility for a 2 year old place.

### [Two year olds · East Ayrshire Council](#)

| Birthday                         | Term   | Month   |
|----------------------------------|--------|---------|
| 1st March—31st August            | Autumn | August  |
| 1st September—31st December      | Spring | January |
| 1st January—last day of February | Summer | April   |

## Deferred Entry to primary school and an additional year of early learning and childcare

Parents and carers of children who are still 4 years old on the date they are eligible to start school in August can delay their child's start at primary school for a year.

From August 2023, children are automatically entitled to an additional year of funded early learning and childcare (ELC) if:

- they are still 4 years old on the date they are eligible to start school and
- their fifth birthday is on or between the day after school starts in August and the end of February

Parents and carers should advise the Head or Manager of the early childhood centre, funded ELC provider or childminder of their intention to defer their child's entry to primary school for a year and access an additional year of funded early learning and childcare.

Parents who wish an additional year of funded ELC for their child should be provided with a link to the online application form entitled "Additional Year of Early Learning and Childcare" to complete and submit by the last day of February.

Further information is available from the Parent Club website

Can my child defer starting school? | [www.parentclub.scot/elc](http://www.parentclub.scot/elc)

## My child has a place, do I have to register again?

If your child is returning for their pre-school year to the same early childhood centre, funded ELC provider or childminder, **you do not have to register again.**

However, you should complete and submit a new application by **28 February 2025** if you wish to:

- change your child's pattern of attendance
- change placement to another ECC or funded ELC provider or childminder for session 2025/26 or
- if your ELC setting or childminder will start delivering up to 1140 funded hours from August 2025

## Ballot

A ballot may be necessary in some centres in the following circumstances:

- Oversubscription of new applications
- Oversubscription for particular elc models

The priority criteria will apply to all ballots

Each centre is registered with the Care Inspectorate for a maximum number of places, therefore it is not possible to satisfy all requested patterns of attendance. You will be asked to state an elc model when you complete the application form. Places and elc models will be allocated according to the allocation criteria set out in the ELC Allocation Policy Priorities 1 to 9.

If your application for a place is not allocated in the ELC setting of your first choice, then your application will be considered for a place in the ELC setting of your second choice.

If your second choice of ELC setting cannot provide a place, then you will be offered an alternative place for your child.

**Please note:** If your child is allocated a place in an early childhood centre where there is an associated primary school, **there is no automatic right to a place in the primary school.**

# Early Learning and Childcare Allocations Policy

**Priority criteria for the allocation of funded places for eligible 2-year-old children and entitled 3 and 4 year-old children.**

**Priority 1:** Children in need as defined by the Children (Scotland) Act 1995 or children with additional support for learning needs as defined by the Educational (Additional Support for Learning) (Scotland) Act 2004 as amended.

*If you believe your child meets the criteria as set out in Priority 1, you will be asked on the application form to note the name of your Health Visitor or Lead Professional who will be contacted to support your application.*

\*Priority One placement must be initiated by a Request for Assistance and where appropriate a Wellbeing Assessment.

**Priority 2:** Children already attending or returning to the same ELC setting (early childhood centre, funded provider or a registered childminder providing funded places) including children who attended as eligible 2 year olds and children having an additional year of ELC as follows: -

- Children who have additional support needs where a multi-agency assessment of wellbeing indicates potential benefit from an additional year of early learning and childcare;
- Children who are entitled to an additional year of early learning and childcare if
  - they are still 4 years old on the date they are eligible to start school and
  - their fifth birthday is on or between the day after school starts in August and the end of February

**Priority 3:** Children who have a sibling attending the same ELC setting. This includes younger or older siblings and children of multiple birth ie twins, triplets etc attending the same ELC setting in the new academic year to which the application relates. Places will be allocated according to the defined geographic area for the ELC setting.

**Priority 4:** Children resident in East Ayrshire postcodes in Scottish Indices of Multiple Deprivation (SIMD) Quintile1.

Within this priority, the following criteria apply in order:-

- (i) Children whose parents are in employment, education or training and are in receipt of income support, income based job seekers allowance, working tax credits or universal credit.
- (ii) Children whose parents are in employment, education or training
- (iii) Children resident in SIMD Quintile1 in East Ayrshire

**Priority 5:** Children resident in East Ayrshire postcodes in Scottish Indices of Multiple Deprivation (SIMD) Quintile 2.

Within this priority the following criteria apply in order:-

- (i) Children whose parents are in employment, education or training and are in receipt of income support, income based job seekers allowance, working tax credits or universal credit.
- (ii) Children whose parents are in employment, education or training
- (iii) Children resident in SIMD Quintile 2 in East Ayrshire

**Priority 6:** All new applications for children residing in the defined geographical area for the ELC setting. If a ballot is required, new applications will be split into 4 year olds and 3 year olds.

1. Applications for 4 year olds (This will support transition to school)
2. Applications for 3 year olds

**Priority 7:** All new applications for children residing in East Ayrshire but who reside out with the defined geographical area for the ELC setting.

**Priority 8:** Children resident in isolated or rural areas out with the boundary of East Ayrshire but within the catchment area of an East Ayrshire primary School.

**Priority 9:** Children resident out with the boundary of East Ayrshire

### Eligible 2-year olds

Places will be allocated in priority order as set out in the following criteria:

- i) Requests for assistance from another agency for 2-year-old children who meet the criteria set out in **Priority 1** of the Council's Early Learning and Childcare Allocation Policy

Eligibility for funded early learning and childcare entitlement for 2 year olds is set out in the Children and Young People (Scotland) Act 2014

- ii) Applications for 2-year-old children who are eligible for a funded place under the Children and Young People (Scotland) Act 2014 who are:
  - Looked after
  - Under a kinship care order
  - Have a parent appointed guardian
  - Have a parent who has experience of care
  - A child whose parent is in receipt of qualifying benefits
  - A child who meets the conditions of Part VI of the Immigration and Asylum Act 1999

Qualifying Benefits include:

- Income Support
- Jobseeker's Allowance (Income Based)
- Employment Support Allowance (Income Based)
- Child Tax Credit, but not Working Tax Credit, and your income is less than **£19,995\***
- Child Tax Credit and Working Tax Credit and income is **£9,552** or less
- Universal Credit with household take-home pay, is **£850** a month or less
- Asylum Seeker receiving support under Part VI of the Immigration and Asylum Act 1999
- Incapacity Benefit or Severe Disablement Allowance
- State Pension Credit.

\* The income threshold for CTC & WTC can vary annually.

# Local Authority Centres

All establishments are non-denominational.

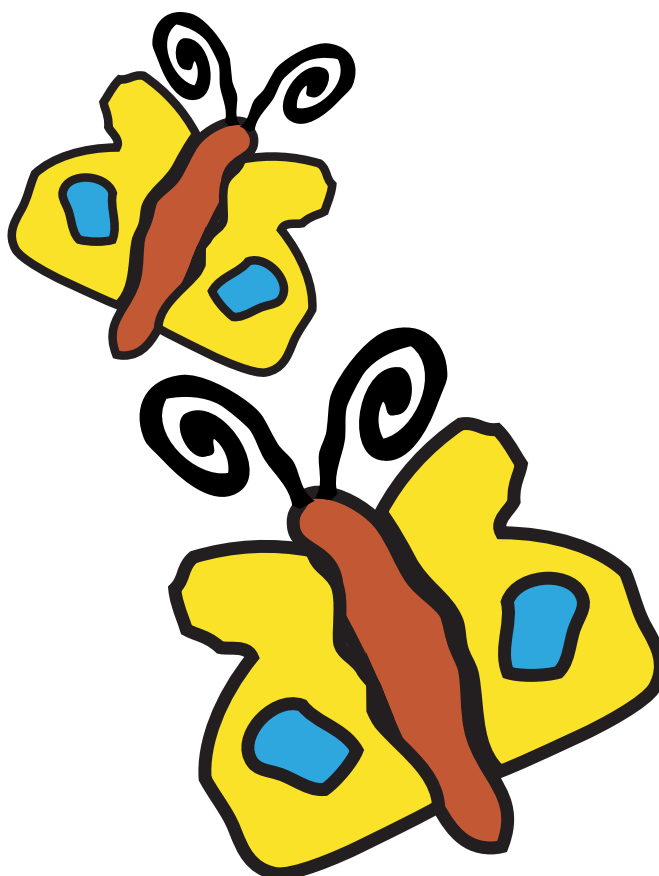
| Early childhood centre | Address   | Telephone Number | Age Group            | Model 2024-2025 | Defined Geographic Area Priorities 3,6 and 7           |
|------------------------|---|------------------|----------------------|-----------------|--|
| <b>Auchinleck</b>      | Dalsalloch Road,<br>Auchinleck<br>KA18 2BU                    | 01290 421260     | 2, 3 and 4 year olds | <b>1,4</b>      | Auchinleck primary school and Ochiltree primary school |
| <b>Bellsbank *</b>     | Craiglea Crescent,<br>Dalmellington<br>KA6 7UA                | 01292 551195     | 2,3 and 4 year olds  | <b>1,2,3,4</b>  | Bellsbank Primary school                               |
| <b>Cairns *</b>        | Altonhill Avenue,<br>Kilmarnock<br>KA3 1PH                    | 01563 533177     | 2,3 and 4 year olds  | <b>1,4</b>      | Hillhead primary school                                |
| <b>Catrine</b>         | Newton Street,<br>Catrine<br>KA5 6RY                          | 01290 551233     | 2,3 and 4 year olds  | <b>1,4</b>      | Catrine primary school and Sorn primary school         |
| <b>Cherry Trees</b>    | The Barony Campus,<br>Auchinleck Road,<br>Cumnock<br>KA18 1FQ | 01290 427299     | 2,3 and 4 year olds  | <b>1,2,3,4</b>  | Loch Norris primary school                             |
| <b>Crosshouse</b>      | Playingfield Road,<br>Crosshouse<br>KA2 0JJ                   | 01563 554972     | 3 and 4 year olds    | <b>1,4</b>      | Crosshouse primary school                              |
| <b>Dalmellington</b>   | Ayr Road,<br>Dalmellington<br>KA6 7SJ                         | 01292 550364     | 3 and 4 year olds    | <b>1,4</b>      | Dalmellington primary school                           |
| <b>Dalrymple</b>       | Hillview,<br>Dalrymple<br>KA6 6PZ                             | 01292 560368     | 2,3 and 4 year olds  | <b>1,4</b>      | Dalrymple primary school                               |
| <b>Darvel</b>          | Campbell Street East,<br>Darvel<br>KA17 0BP                   | 01560 320785     | 3 and 4 year olds    | <b>1,4</b>      | Darvel primary school                                  |
| <b>Drongan</b>         | Millmannoch Avenue,<br>Drongan<br>KA6 7BY                     | 01292 591521     | 2,3 and 4 year olds  | <b>1,4</b>      | Drongan primary school                                 |

| Early childhood centre | Address   | Telephone Number | Age Group            | Model 2024-2025 | Defined Geographic Area Priorities 3,6 and 7 |
|------------------------|---|------------------|----------------------|-----------------|--|
| <b>Dunlop</b>          | Main Street, Dunlop KA3 4AN   | 01560 484098     | 3 and 4 year olds    | <b>1,4</b>      | Dunlop primary school                        |
| <b>Fenwick</b>         | 1 Kirkton Road, Fenwick KA3 6DH                                     | 01560 600403     | 3 and 4 year olds    | <b>1,4</b>      | Fenwick primary school                       |
| <b>Flowerbank *</b>    | 30 North Hamilton Street, Kilmarnock KA1 2QJ                        | 01563 522722     | 2,3 and 4 year olds  | <b>1,2,3,4</b>  | Annanhill primary school                     |
| <b>Galston</b>         | Western Road, Galston KA4 8BG                                       | 01563 820360     | 2, 3 and 4 year olds | <b>1,2,3,4</b>  | Galston primary school                       |
| <b>Gargieston</b>      | Dundonald Road, Kilmarnock KA1 1UG                                  | 01563 533067     | 3 and 4 year olds    | <b>1,4</b>      | Gargieston primary school                    |
| <b>Hillbank</b>        | North West Kilmarnock Area Centre, Western Road, Kilmarnock KA3 1NQ | 01563 521064     | 2,3 and 4 year olds  | <b>2,3,4</b>    | Hillhead primary school                      |
| <b>Hurlford</b>        | Union Street, Hurlford Kilmarnock KA1 5BT                           | 01563 525098     | 3 and 4 year olds    | <b>1,4</b>      | Hurlford primary school                      |
| <b>James Hamilton</b>  | William McIlvanney Campus, Sutherland Drive, Kilmarnock KA3 7DF     | 01563 558508     | 2,3 and 4 year olds  | <b>1,2,3,4</b>  | James Hamilton primary school                |
| <b>Kilmaurs</b>        | East Park Drive, Kilmaurs KA3 2QS                                   | 01563 538674     | 2,3 and 4 year olds  | <b>1,4</b>      | Kilmaurs primary school                      |
| <b>Lainshaw</b>        | Kilwinning Road, Stewarton KA3 3DL                                  | 01560 483653     | 2,3 and 4 year olds  | <b>1,4</b>      | Lainshaw primary school                      |
| <b>Littlemill</b>      | Littlemill, Rankinston KA6 7HJ                                      | 01292 590221     | 3 and 4 year olds    | <b>1,4</b>      | Littlemill primary school                    |

| Early childhood centre               | Address   | Telephone Number | Age Group           | Model 2024-2025 | Defined Geographic Area Priorities 3,6 and 7 |
|--------------------------------------|---|------------------|---------------------|-----------------|--|
| <b>Loanhead</b>                      | Dick Road, Kilmarnock KA1 3AP                                   | 01563 522938     | 2,3 and 4 year olds | <b>1,4</b>      | Loanhead primary school                      |
| <b>Logan</b>                         | Logangate Terrace, Logan, Cumnock KA18 3HD                      | 01290 421916     | 3 and 4 year olds   | <b>1,4</b>      | Logan primary school                         |
| <b>Mauchline</b>                     | The Loan, Mauchline KA5 6AN                                     | 01290 550306     | 3 and 4 year olds   | <b>1,4</b>      | Mauchline primary school                     |
| <b>Muirkirk</b>                      | Burns Avenue, Muirkirk KA18 3RH                                 | 01290 661350     | 2,3 and 4 year olds | <b>1,4</b>      | Muirkirk primary school                      |
| <b>Netherthird *</b>                 | Craigens Road, Cumnock KA18 3AN                                 | 01290 425823     | 2,3 and 4 year olds | <b>1,2,3,4</b>  | Netherthird primary school                   |
| <b>Nether Robertland</b>             | Cairnduff Place, Stewarton KA3 5QF                              | 01560 484934     | 3 and 4 year olds   | <b>1,2,3,4</b>  | Nether Robertland primary school             |
| <b>New Cumnock</b>                   | Afton Bridgend, New Cumnock KA18 4AX                            | 01290 338593     | 2,3 and 4 year olds | <b>1,4</b>      | New Cumnock primary school                   |
| <b>Newmilns</b>                      | Gilfoot, Newmilns KA16 9LP                                      | 01560 320915     | 3 and 4 year olds   | <b>1,4</b>      | Newmilns primary school                      |
| <b>Onthank</b>                       | Meiklewood Road, Kilmarnock KA3 2ES                             | 01563 534660     | 2,3 and 4 year olds | <b>1,4</b>      | Onthank primary school                       |
| <b>Patna</b>                         | Whitehill Avenue, Patna KA6 7LY                                 | 01292 531271     | 2,3 and 4 year olds | <b>1,4</b>      | Patna primary school                         |
| <b>Riccarton</b>                     | 45 Campbell Place, Kilmarnock KA1 4DY                           | 01563 535633     | 3 and 4 year olds   | <b>1,4</b>      | Whattriggs primary school                    |
| <b>Sgoil-àraich na Coille Nuaidh</b> | William McIlvanney Campus, Sutherland Drive, Kilmarnock KA3 7DF | 01563 558505     | 2,3 and 4 year olds | <b>1,4</b>      | East Ayrshire                                |

| Early childhood centre | Address                                    | Telephone Number | Age Group           | Model 2024-2025 | Defined Geographic Area Priorities 3,6 and 7 |
|------------------------|--|------------------|---------------------|-----------------|--|
| <b>Shortlees *</b>     | Blacksyke Avenue,<br>Kilmarnock<br>KA1 3SR | 01563 533678     | 2,3 and 4 year olds | <b>1,2,3,4</b>  | Shortlees primary school                     |
| <b>St Andrews</b>      | Grassyards Road,<br>Kilmarnock<br>KA3 7SL  | 01563 549549     | 3 and 4 year olds   | <b>1,4</b>      | St Andrews primary school                    |
| <b>Whatriggs</b>       | Whatriggs Road,<br>Kilmarnock<br>KA1 3SZ   | 01563 551587     | 2,3 and 4 year olds | <b>1,4</b>      | Whatriggs primary school                     |

\*denotes an early childhood centre that provides a small number of places for children aged 0-2 years which are allocated through a multi-agency resource allocation group.



# Funded ELC Providers

| Funded ELC Provider   | Address  | Telephone Number                   | Age Group            | Model 2024-2025 | Defined Geographic Area Priorities 3,6 and 7      |
|---|--|------------------------------------|----------------------|-----------------|---|
| <b>Beechwood House Nursery</b>  | 34 Dundonald Road,<br>Kilmarnock,<br>KA1 1RX               | 01563 573555                       | 2,3 and 4 year olds  | <b>1,2,3,4</b>  | Gargieston primary school                         |
| <b>Burns Bairns</b>   | The Centre Stane, 2<br>The Cross,<br>Mauchline,<br>KA5 5DA | 07752072111                        | 3 and 4 year olds    | <b>1,4</b>      | Mauchline primary school                          |
| <b>Craighead Country Nursery</b>                                      | Craighead Farm,<br>Mauchline<br>KA5 6EX                    | 01290 559217<br>or<br>07543 094874 | 3 and 4 year olds    | <b>2,3,4</b>    | Galston primary school & Mauchline primary school |
| <b>Dean Park Nursery</b>  | 56 Beansburn,<br>Kilmarnock,<br>KA3 1RN                    | 01563 539128                       | 2,3 and 4 year olds  | <b>2,3,4</b>    | Hillhead primary school & Onthank primary school  |
| <b>Flexible Childcare Services Scotland</b>                           | 15 Elmbank Drive,<br>Kilmarnock,<br>KA1 3AE                | 01563 593222                       | 2,3 and 4 year olds  | <b>1,2,3,4</b>  | Loanhead Primary School                           |
| <b>Grasshoppers Nursery</b>   | 30 Witchknowe Road,<br>Kilmarnock<br>KA1 4LN               | 01563 571598                       | 2, 3 and 4 year olds | <b>2,3,4</b>    | Whattriggs primary school                         |
| <b>Hurlford and Crookedholm Early Learning and Childcare Services</b> | 51 Academy Street,<br>Hurlford,<br>KA1 5BU                 | 07967115689                        | 2,3 and 4 year olds  | <b>1,4</b>      | Hurlford primary school                           |

# Childminders

| Name                       | Contact telephone number           | Email address                | Early Childhood Centre and Funded ELC Provider ( drop off/pick up)   |
|----------------------------|------------------------------------|------------------------------|--|
| <b>Rhona Dunnachie</b>     | 07858 268308                       | rhona.dunnachie@live.co.uk   | Auchinleck ECC   |
| <b>Jane McAusland</b>      | 07826546935                        | janemcausland@icloud.com     | Cherry Trees ECC   |
| <b>Lisa McGinn</b>         | 01290 422481<br>or<br>07933 514661 | lisachildcare08@yahoo.co.uk  | Cherry Trees ECC<br>Netherthird ECC  |
| <b>Lorna Masson</b>        | 01290 423906                       | lorna.masson21@gmail.com     | Cherry Trees ECC<br>Netherthird ECC  |
| <b>Jacqueline Donnelly</b> | 01563 822415<br>or<br>07453975008  | jacqueline.donnelly@sky.com  | Galston ECC  |
| <b>Sharon Bell</b>         | 07976 361251                       | bellie2479@sky.com           | Galston ECC<br>Hurlford ECC<br>Hurlford &<br>Crookedholm ELC<br>Services                                     |
| <b>Fiona Smith</b>         | 01563 539612<br>or<br>07429 642551 | smithfiona@btinternet.com    | Cairns ECC Flowerbank<br>ECC<br>Loanhead ECC<br>James Hamilton ECC<br>Dean Park Nursery<br>Beechwood Nursery |
| <b>Sharon Callaghan</b>    | 01563 522265<br>or<br>07799315420  | sharoncallaghan141@gmail.com | Crosshouse ECC<br>Flowerbank ECC<br>Gargieston ECC<br>Beechwood Nursery                                      |
| <b>Alice Brown</b>         | 01563 529732<br>07551744542        | alicebrown2009@live.co.uk    | Avenue Childcare<br>Cairns ECC<br>Hillbank ECC<br>St Andrews ECC<br>Onthank ECC                              |
| <b>Doreen Jackson</b>      | 01563 536542                       | jacksondoreen14@gmail.com    | Avenue Childcare<br>Cairns ECC<br>Hillbank ECC<br>James Hamilton ECC<br>Onthank ECC<br>St Andrews ECC        |
| <b>Jacqueline Calder</b>   | 01563 527961                       | jacqueline.calder@live.com   | Avenue Childcare<br>Cairns ECC<br>Hillbank ECC<br>Onthank ECC  |

| <b>Name</b>                | <b>Contact telephone number</b>   | <b>Email address</b>             | <b>Early Childhood Centre and Funded ELC Provider ( drop off/pick up)</b>                             |
|----------------------------|-----------------------------------|----------------------------------|---|
| <b>Joanne Blair</b>        | 01563 539656                      | blairjojo76@gmail.com            | Cairns ECC<br>Hillbank ECC<br>Avenue Childcare<br>James Hamilton ECC<br>Onthank ECC<br>Loanhead ECC   |
| <b>Joyce Mason</b>         | 07542 515342                      | joycemason82@hotmail.com         | Kilmaurs ECC  |
| <b>Monique Sloan</b>       | 07595 740737                      | Monique.sloan40@outlook.com      | Avenue Childcare<br>Cairns ECC<br>Hillbank ECC<br>James Hamilton ECC<br>Onthank ECC<br>St Andrews ECC |
| <b>Nicola Logue</b>        | 07814 734839                      | nicolalogue5@gmail.com           | Avenue Childcare<br>Cairns ECC<br>Hillbank ECC<br>Kilmaurs ECC<br>Onthank ECC                         |
| <b>Tracey McIntyre</b>     | 01563 402650                      | mtracey@hotmail.co.uk            | Onthank ECC   |
| <b>Angela Keen</b>         | 01563 401855<br>or<br>07729419600 | angelaflaming_170702@hotmail.com | Riccanton ECC<br>Shortlees ECC<br>Whatriggs ECC<br>Grasshoppers Nursery                               |
| <b>Heather Morrison</b>    | 07834 379572                      | heatherc1201@hotmail.co.uk       | Riccanton ECC<br>Shortlees ECC<br>Whatriggs ECC<br>Grasshoppers Nursery                               |
| <b>Elaine Wilson</b>       | 01563 527012                      | elainewilson72@gmail.com         | Kilmaurs ECC  |
| <b>Dolina Rae</b>          | 01290 550470<br>07799 567 359     | dolina.rae@outlook.com           | Catrine ECC<br>Mauchline ECC<br>Burns Bairns  |
| <b>Elizabeth MacMillan</b> | 01290 550494<br>or<br>07800897130 | hhhe19@yahoo.co.uk               | Burns Bairns ECC<br>Mauchline ECC   |
| <b>Claire White</b>        | 07544 319894                      | claire_fergusson@hotmail.co.uk   | Patna ECC<br>Dalmellington ECC  |
| <b>Julie Dowds</b>         | 01560 480068<br>or<br>07811 58864 | julie.dowds@gmail.com            | Lainshaw ECC<br>Nether Robertland ECC   |
| <b>Lesley Bowie</b>        | 07576 407999                      | lesbow@hotmail.com               | Lainshaw ECC<br>Nether Robertland ECC   |
| <b>Amy Jackson</b>         | 07939188794                       | amyjacksonchildminding@gmail.com | Onthank ECC   |

| <b>Name</b>                | <b>Contact telephone number</b>   | <b>Email address</b>          | <b>Early Childhood Centre and Funded ELC Provider ( drop off/pick up)</b>                        |
|----------------------------|-----------------------------------|-------------------------------|--|
| <b>Louise Alldridge</b>    | 07723 363258                      | loobyloo1974@googlemail.com   | Lainshaw ECC<br>Nether Robertland ECC  |
| <b>Marianne Sloan</b>      | 01560 485862<br>or<br>07791808980 | marzie78@hotmail.com          | Lainshaw<br>Nether Robertland ECC  |
| <b>Wendy Carr</b>          | 0773 4032512                      | jamescarr1@hotmail.co.uk      | Lainshaw ECC<br>Nether Robertland ECC  |
| <b>Kerry-Ann MacKenzie</b> | 07746543642                       | Kerry-ann1612@hotmail.com     | Hurlford ECC<br>Hurlford &<br>Crookedholm ELCS<br>Galston ECC<br>Whatriggs ECC<br>St Andrews ECC |
| <b>Sharon McRoberts</b>    | 07988237306                       | sharon.haggarty@sky.com       | Hurlford ECC<br>Hurlford &<br>Crookedholm ELCS<br>St Andrews ECC                                 |
| <b>Kathleen McLeod</b>     | 01560 321637<br>or<br>07964897885 | kathleenmcl@mail.com          | Darvel ECC<br>Newmilns ECC   |
| <b>Lynne Stewart</b>       | 07753143996                       | Lynnestewart1980@hotmail.com  | Crosshouse ECC<br>Cairns ECC<br>Gargieston ECC   |
| <b>Sharon Brown</b>        | 07553960180                       | sharon.a.brown.1969@gmail.com | Onthank ECC<br>Dean Park Nursery<br>Cairns ECC<br>Hillbank ECC                                   |
| <b>Rachel Lennox</b>       | 01563 535793<br>or<br>07749736749 | rvlennox@aol.com              | Cairns ECC<br>Hillbank ECC<br>Onthank ECC<br>Kilmaurs ECC  |
| <b>Marla Green</b>         | 01563 541809                      | mgreen.ccs@hotmail.co.uk      | Shortlees ECC<br>Whatriggs ECC<br>Riccanton ECC<br>Grasshoppers ECC                              |
| <b>Kileen Gaunt</b>        | 07715541546                       | kilcon@sky.com                | Mauchline<br>Burns Bairns  |
| <b>Elaine Halliday</b>     | 07514630824                       | elaineha11@yahoo.com          | Crosshouse<br>Annanhill<br>Cairns  |
| <b>Ann Bloor</b>           | 07523 134276                      | giraffechildminding@gmail.com | Darvel   |

# Useful Contacts

## Education Service

[EarlyYearsAdmissions@east-ayrshire.gov.uk](mailto:EarlyYearsAdmissions@east-ayrshire.gov.uk)

[www.east-ayrshire.gov.uk](http://www.east-ayrshire.gov.uk)

Twitter: @EastAyrshire

## East Ayrshire Community Childcare Team

[communitychildcaresupport-admin@east-ayrshire.gov.uk](mailto:communitychildcaresupport-admin@east-ayrshire.gov.uk)

## Parent Club

[www.parentclub.scot/elc](http://www.parentclub.scot/elc)

Twitter: @parentclubscot

## Care Inspectorate

Compass House 11 Riverside Drive DUNDEE DD1 4NY

Tel: 01382 207100

[www.careinspectorate.com](http://www.careinspectorate.com)

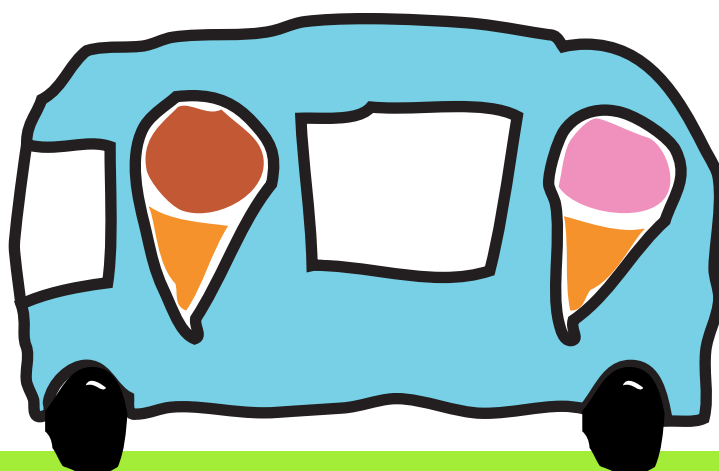
Twitter: @CareInspect

## Education Scotland

[www.education.gov.scot](http://www.education.gov.scot)

Twitter: @EducationScot

*The information contained in this guide is accurate at the time of publication but may be subject to change.*



## Notes

[illegible]

## Notes

[illegible]



East Ayrshire Council  
Comhairle Siorrachd Àir an Ear

Designed and produced by  
East Ayrshire Communications Section ©EAC 2025