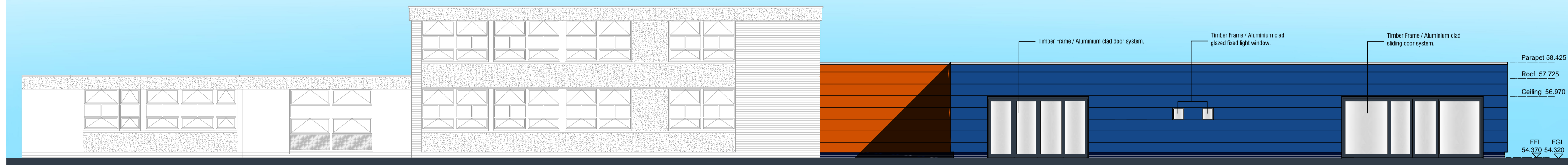


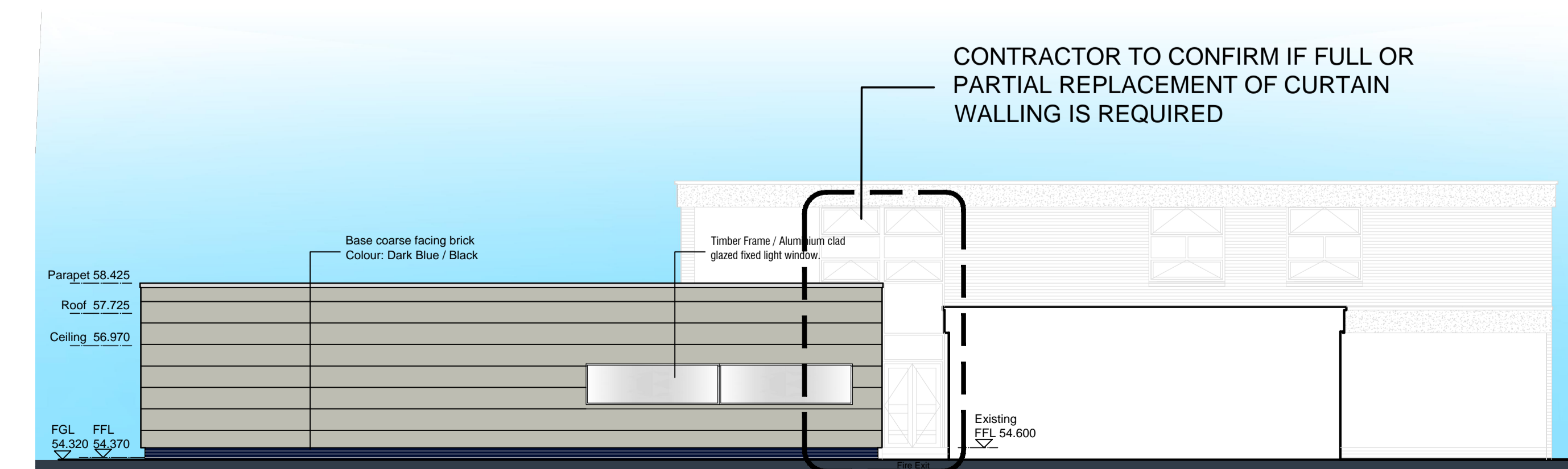
EAST ELEVATION AS PROPOSED (ELEVATION 1) SCALE 1:100



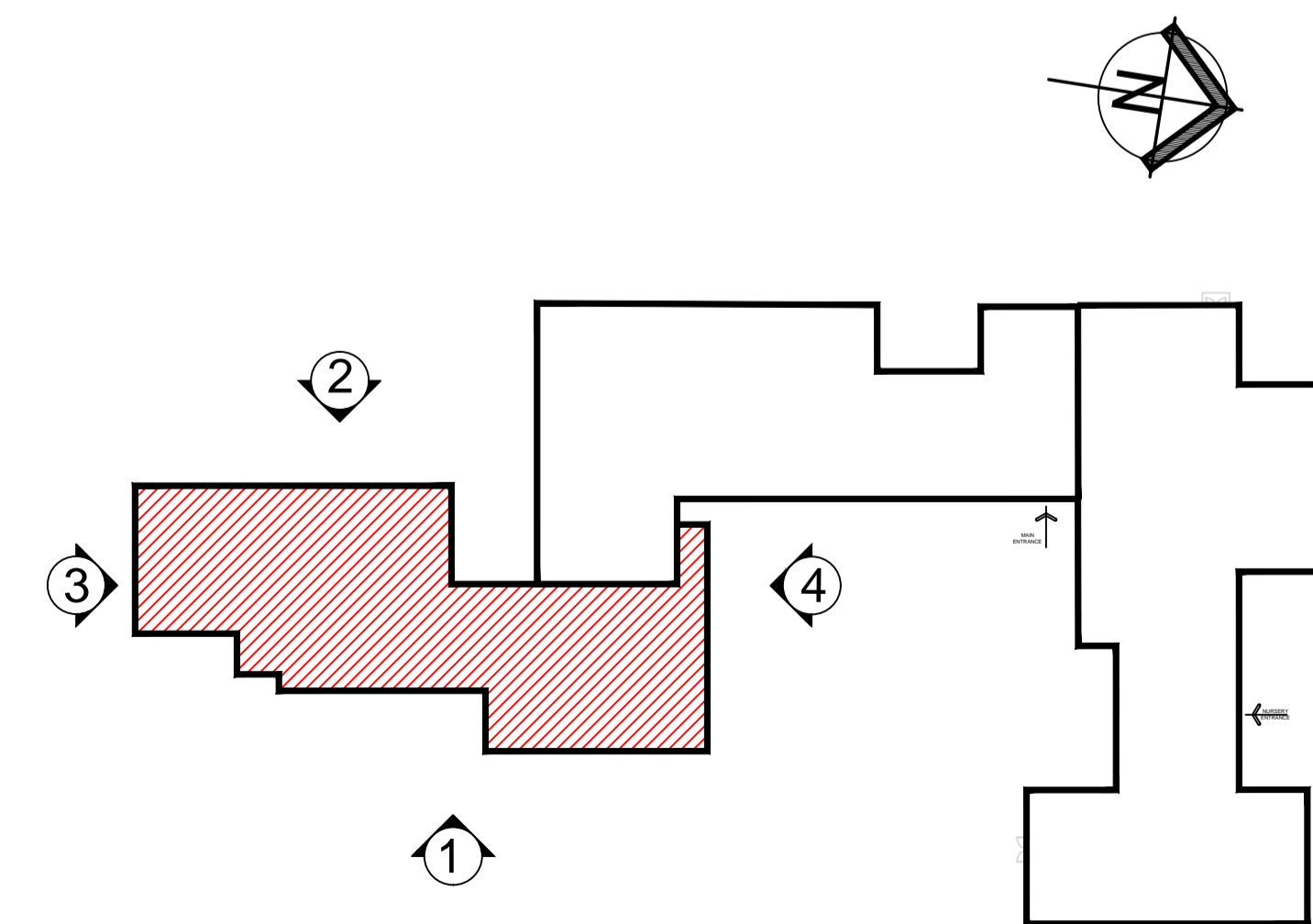
PART WEST ELEVATION AS PROPOSED (ELEVATION 2) SCALE 1:100



SOUTH ELEVATION AS PROPOSED (ELEVATION 3) SCALE 1:100



NORTH ELEVATION AS PROPOSED (ELEVATION 4) SCALE 1:100



KEY PLAN SCALE 1:500

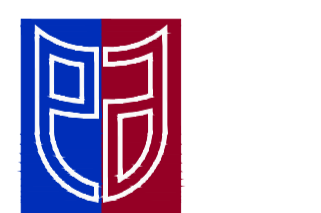
SIZING :
This drawing must not be scaled, only written dimensions to be respected.
Contractor must verify all necessary sizes & particulars on site prior to commencing work.

ELECTRICAL :
All electrical installations to comply with current edition of the I.E.E regulations & BS 7671:2001, also to East Ayrshire Council electrical specification criteria.

CDM :
Where works fall within the scope of the Construction (Design & Management) Regulations 2007, the Principal Contractor will be required to comply with the statutory requirements contained within these regulations.

ASBESTOS :
Where materials are thought to contain asbestos, stop any work, keep all persons out of the area. Close, seal or lock off the area (where practicable) Do not remove any tools or materials.
Inform the principal contractor who will contact the EAC Asbestos Co-ordinator. A specialist contractor must be appointed for the removal & disposal of asbestos.

B	External door system annotation amended	27.10.14	AmB
A	External store added - Window positions amended	13.08.14	AmB
	Curtain walling amended		
Rev	Description	Date	By



East Ayrshire COUNCIL

Finance and Corporate Support
Corporate Infrastructure
Council Offices, Opera House Tel : 01563 555235
8 John Finnie Street Fax : 01563 555235
Kilmarnock KA1 1DD www.east-ayrshire.gov.uk

Project
PROPOSED EXTENSION
Dalrymple Primary School
Hillview, Dalrymple, KA6 6PZ

Client
Education and Social Services

Drawing Title
ELEVATIONS AS PROPOSED

Project File Ref 14/078/ED/IR Asset No. Drawn by AmB Checked by AmB

Drawing Status TENDER Date July.14 Scale 1:100

Dwg No. 14/078 AL(2-) 206 Rev. B | A1