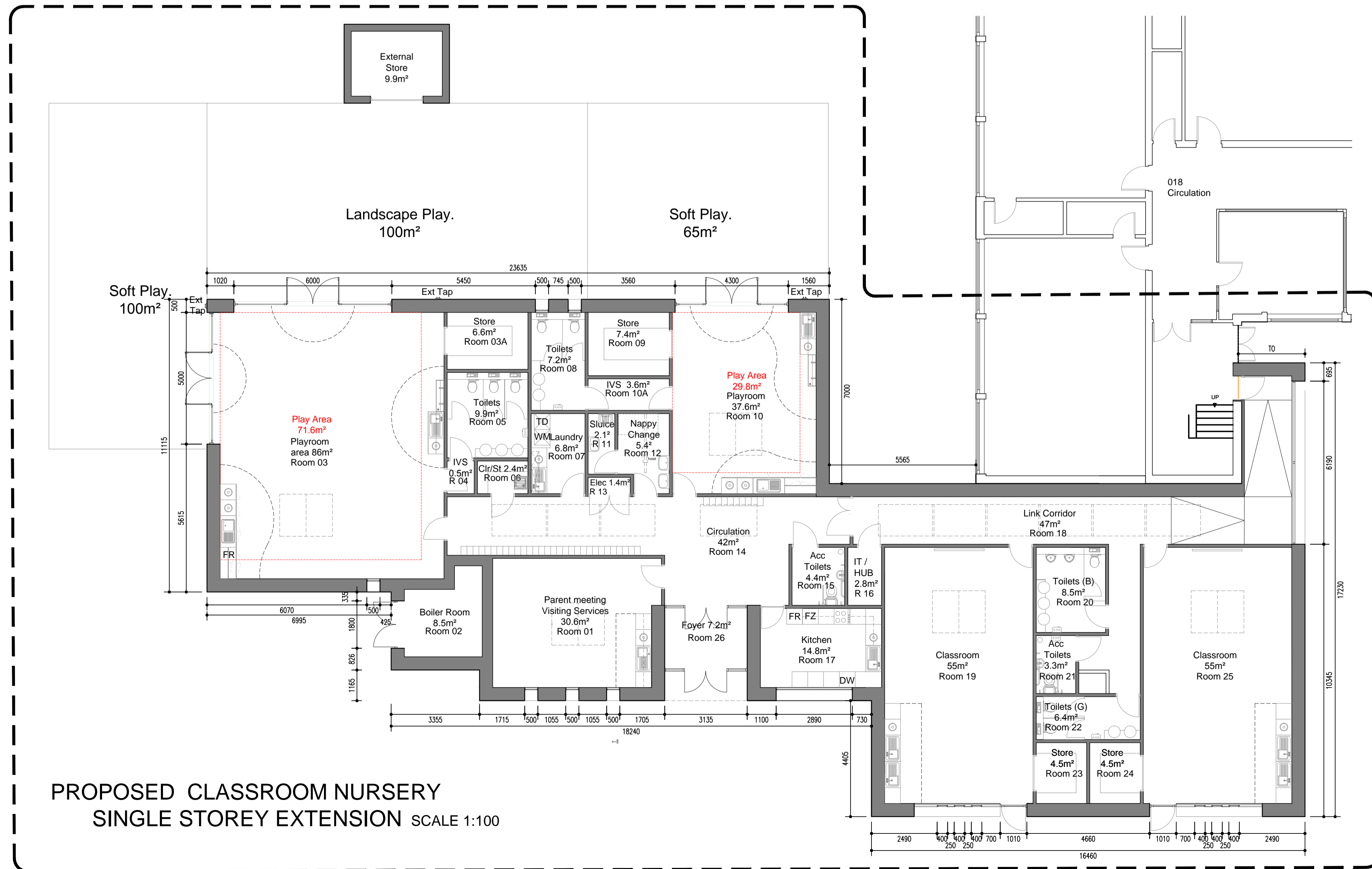


LOCATION OF EXTENSION  
SCALE 1:250



PROPOSED CLASSROOM NURSERY  
SINGLE STOREY EXTENSION SCALE 1:100

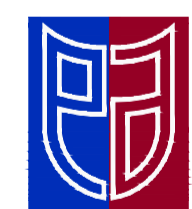
**SIZING :**  
This drawing must not be scaled, only written dimensions to be respected.  
Contractor must verify all necessary sizes & particulars on site prior to commencing work.

**ELECTRICAL :**  
All electrical installations to comply with current edition of the I.E.E regulations & BS 7671: 2001, also to East Ayrshire Council electrical specification criteria.

**CDM :**  
Where works fall within the scope of the Construction (Design & Management) Regulations 2007, the Principal Contractor will be required to comply with the statutory requirements contained within these regulations.

**ASBESTOS :**  
Where materials are thought to contain asbestos, stop any work, keep all persons out of the area. Close, seal or lock off the area (where practicable) Do not remove any tools or materials.  
Inform the principal contractor who will contact the EAC Asbestos Co-ordinator.  
A specialist contractor must be appointed for the removal & disposal of asbestos.

B	EXISTING NURSERY DELETED	01.09.14	AmB
A	EXTERNAL STORE ADDED	13.08.14	AmB
Rev	Description	Date	By



**East Ayrshire**  
COUNCIL

Finance and Corporate Support  
Corporate Infrastructure  
Council Offices, Opera House  
8 John Finnie Street  
Kilmarnock KA1 1DD  
Tel : 01563 555495  
Fax : 01563 555235  
www.east-ayrshire.gov.uk

Project  
PROPOSED CLASSROOM EXTENSION  
Dalrymple Primary School  
Hillview, Dalrymple, KA6 6PZ

Client  
Education and Social Services

Drawing Title  
ADDITIONAL CLASSROOM FEASIBILITY STUDY  
GROUND FLOOR PLAN AS PROPOSED

Project File Ref	Asset No.	Drawn by	Checked by
14/078/ED/IR	.	AmB	

Drawing Status  
**TENDER**  
Date  
Mar.14  
Scale  
1:100

Dwg No.	Rev.	By
14/078 AL(2-) 202	B	A1