

CATRINE COMMUNITY ACTION PLAN 2017 - 2022



Developed by Catrine Community Action Plan Steering Group
with support from East Ayrshire Vibrant Communities

Contents



Introduction **Page 3**

Community Profile **Page 6**

Community Response **Page 10**

Community Priorities **Page 14**

Theme 1:	Village Appearance	Page 15
Theme 2:	Services and Facilities	Page 16
Theme 3:	Local Economy	Page 17
Theme 4:	Accessibility	Page 18
Theme 5:	Natural Environment	Page 19
Theme 6:	Community Spirit	Page 20

Making it Happen **Page 21**





Introduction

Catrine is a village which sits on the River Ayr Way, almost half way between Glenbuck and Ayr. A village with a rising population, employment in Catrine has been increasingly difficult to obtain with many large businesses and industry having moved away. Loch Lomond Group are still the main employer in Catrine, with many employees also living in Catrine.

Catrine was created over 200 years ago around one of the earliest Cotton Mills in Scotland. The mills were eventually demolished in 1985 after several years of inactivity.

Services and facilities around Catrine are becoming fewer and most are now found in larger town hubs surrounding Catrine, such as Mauchline, Auchinleck and Cumnock. This has accessibility and financial restrictions for many local residents.

Catrine is a village full of history and environmental heritage where potential could be maximised through the marketing and promotion of tourism. With minor and major improvements within the village, Catrine could again be a place with industry and geography as its focus.

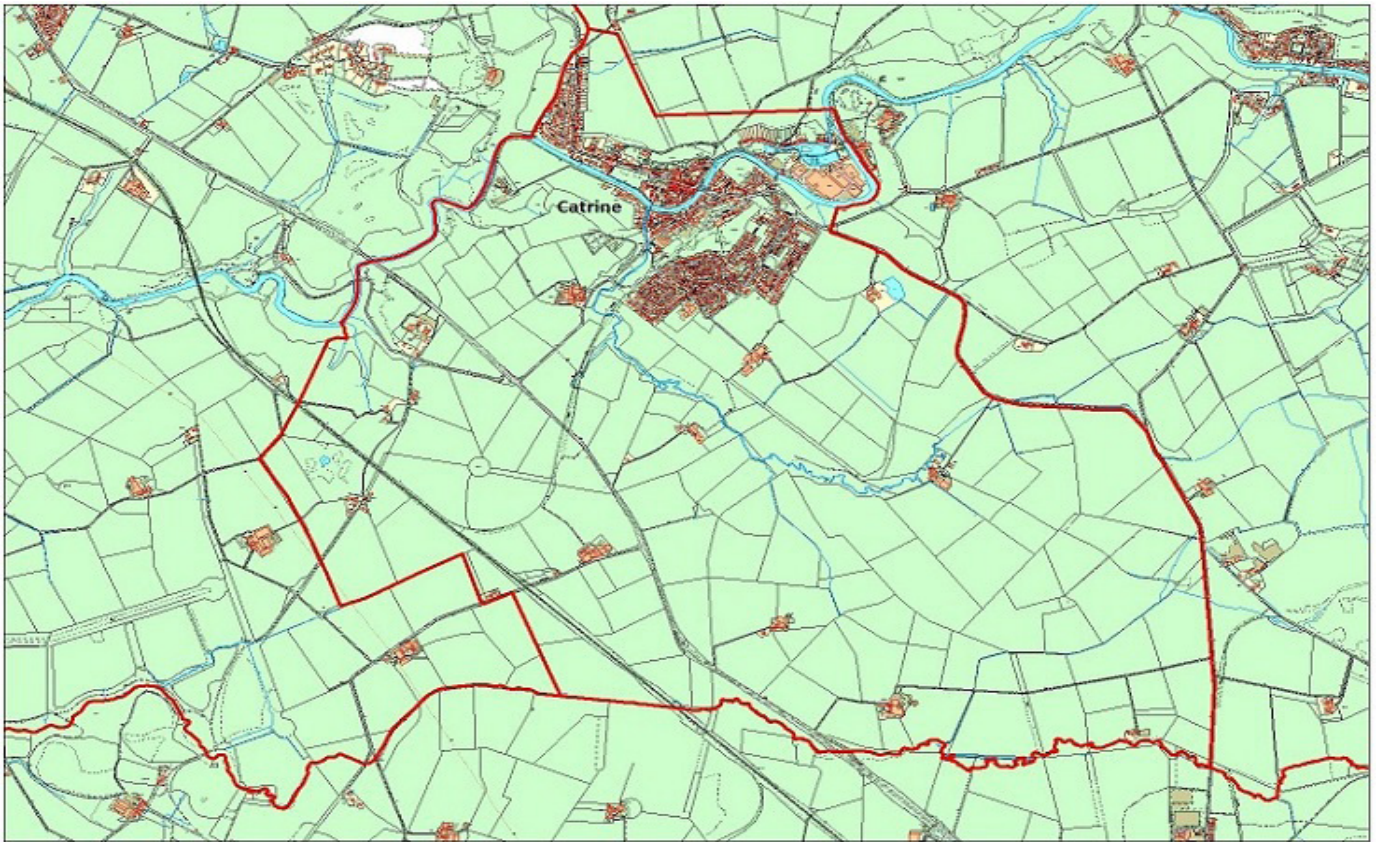
There are many groups, organisations and individuals within the village that actively encourage the local community to get involved and help provide services, facilities and resources.

Through the Community Action Plan it is hoped that we can reignite the spark in local residents to come together and develop the one vision for Catrine outlined in this plan. Celebrating what was, and what still is, at the heart of Catrine.

This plan is for the whole community and is jointly owned by all the organisations and individuals who took part in its preparation. We will be working together to ensure its implementation over the next 5 years.

Catrine

The first map below (fig 1.1) shows the designated area of Catrine Community Council, while the second map (fig 1.2) details the village of Catrine.

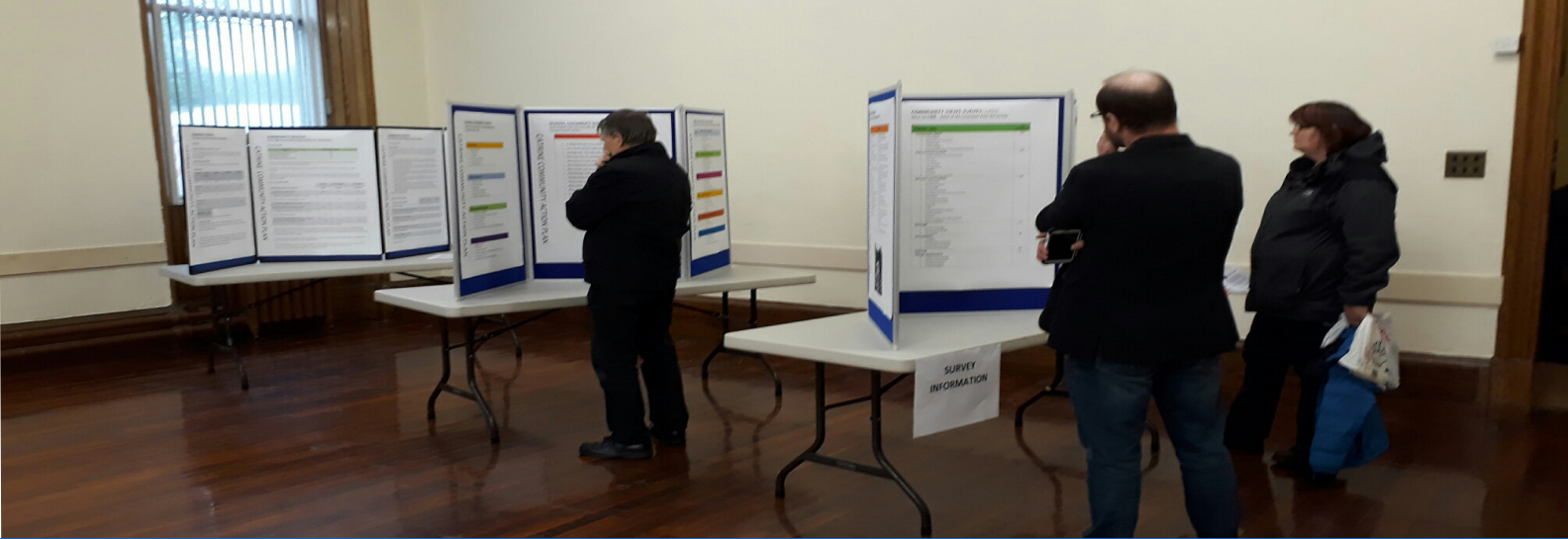


(fig 1.1)



(fig 1.2)

These maps are reproduced from the Ordnance Survey material with permission of Ordnance Survey on behalf of the Controller of Her Majesty's Stationery Office © Crown copyright. Unauthorised reproduction infringes Crown Copyright and may lead to prosecution or civil proceedings. East Ayrshire Council 100023409



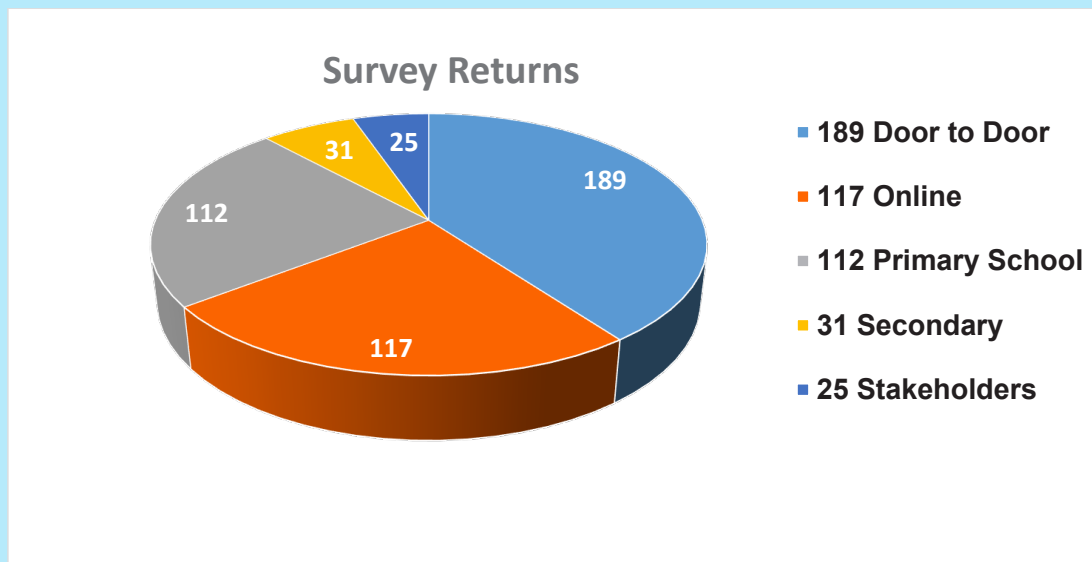
Community Consultation

This Community Action Plan sets out the priorities for the development of Catrine over the next 5 years as determined by the community through an extensive process of community engagement.

Research was organised and led by local community groups and local residents, carried out over a 7 month period from June 2016 to January 2017.

The Plan contains:

- A summary of our Community Profile.
- An overview of the community response.
- A breakdown of community priorities.
- Information on how to get in touch.



In summary:

- 474 total surveys returned.
- 45% return rate was achieved.
- 80 people attended the community event to vote on their priorities.

Community Profile





Facts & Figures

HISTORY

Catrine is a picturesque village in East Ayrshire located next to the River Ayr Way, with around 2,200 inhabitants.

Catrine was created around one of the earliest cotton mills in Scotland in 1787 by Claud Alexander of Ballochmyle, with the River Ayr providing the water power for the 5-storey mill building.

In 1801, the factory was purchased by James Finlay and Company of Glasgow. The business was increased in 1823 when they added extensive bleaching works. The site of the former bleaching works of James Finlay and Company is now occupied as a Bonded Warehouse by Loch Lomond Group.

In 2006, the so-called Catrine Voes (the reservoirs to the former cotton works), the Radical Brae and the Chapel Brae were designated as a Local Nature Reserve.

POPULATION

The population of Catrine has increased over the last five years. At the last Census in 2011, 2236 people lived in Catrine.

HOUSING

The total number of dwellings in Catrine as at the Census in 2011 was 1047.

Catrine had a lower percentage of detached and semi-detached dwellings than the East Ayrshire and Scotland wide statistics. There are more flats than the East Ayrshire average and more terraced dwellings than the East Ayrshire and Scotland wide statistics.

Catrine reported a lower level of owner occupied housing than the East Ayrshire and Scotland average and a higher level of social and private rented housing.



Facts & Figures

EMPLOYMENT

At the time of the 2011 Census, the figures indicate 35.7% of economically active people work in full time employment. Self-employment represents 6.1% of economic activity while unemployment in Catrine stood at 7.3%. There were 126 people counted as unemployed in Catrine at that time.

There were significantly more people employed in the manufacturing, construction and health and social care sectors than the East Ayrshire and National average. There were significantly less people employed in the financial and insurance activities, professional activities and education than the East Ayrshire and National averages.

EDUCATION

Catrine Early Childhood Centre and Catrine Primary School are part of the Auchinleck Learning Community. Pupils from Catrine are zoned for Auchinleck Academy, approximately 3.5 miles away from the village of Catrine.

Primary schools attended by local young people outwith the local area include: Sorn Primary, Mauchline Primary and St Patrick's Primary. Secondary schools attended by local young people outwith the local area include: St Joseph's Academy. Daldorch House School is part of the National Autistic Society and offers fully individual care and education to children with autism from across Scotland.

The 2011 Census indicates that 38.7% of people aged 16 or over in Catrine have no qualifications, slightly higher than the Scottish average and considerably higher than the East Ayrshire average. The rate of people aged 16 or over with a degree in Catrine (11.8%) is significantly lower than the East Ayrshire and Scottish average.



Facts & Figures

HEALTH

At the time of the 2011 Census, 34% of residents in Catrine had a long term health condition. This was higher than both the East Ayrshire and Scottish averages. Figures for almost all conditions are higher in Catrine than across East Ayrshire and Scotland as a whole.

Primary Care Services within Catrine are mainly supplied by J&A Reekie Pharmacy. Ballochmyle Medical Group consisting of surgeries in Catrine and Mauchline are the main GP/Medical Centre for Catrine residents. An Accident and Emergency service is provided from Ayr and Crosshouse Hospitals. Other hospital services include East Ayrshire Community Hospital in Cumnock which has outpatient, day surgery and rehabilitation units.

TRANSPORT

The 2011 Census indicates that 65% of households locally owned cars or vans in the area, meaning 35% of residents reported that they did not own a car or van. The Stagecoach X76 Bus Service runs to Glasgow and Kilmarnock and the 343 Service runs to Ayr.

The nearest Train Station is Auchinleck which sits on the line between Glasgow Central and Newcastle and includes stops in: Stewarton, Kilmarnock, New Cumnock, Dumfries, Gretna and the Metro Centre, Newcastle.

RECREATION

From 7th March 2016 a Mobile Library Service is in action for Catrine. The mobile Library stops at Mill Square, Catrine from 10.00 am to 11.00 am every second Monday. The nearest permanent libraries are Auchinleck and Cumnock. Catrine Community Trust are also running a lending library from the old library facility.

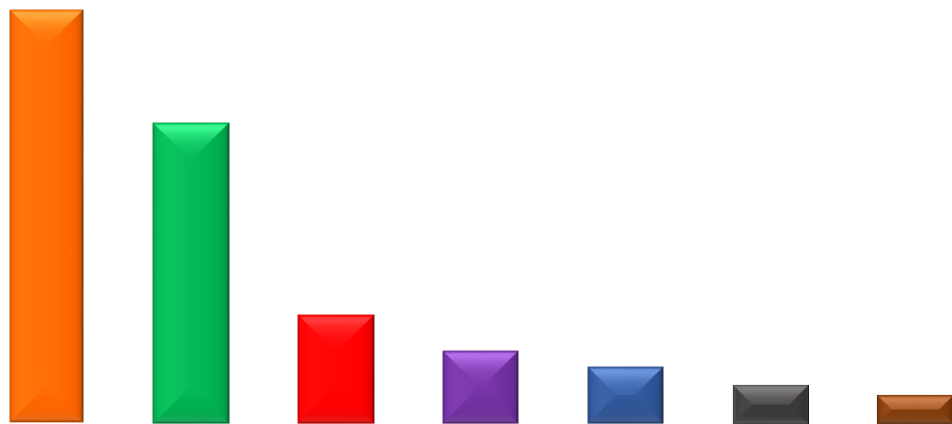
Catrine Community Trust are currently going through the Community Asset Transfer process with Catrine Games Hall and Catrine Community Centre (AM Brown Institute) with the aim to take on the management of the buildings through sub-committees of the Trust.

Community Response





Likes



Themes

What people said:

“Staying in a small, friendly village.”

“The lovely countryside walks around Catrine.”

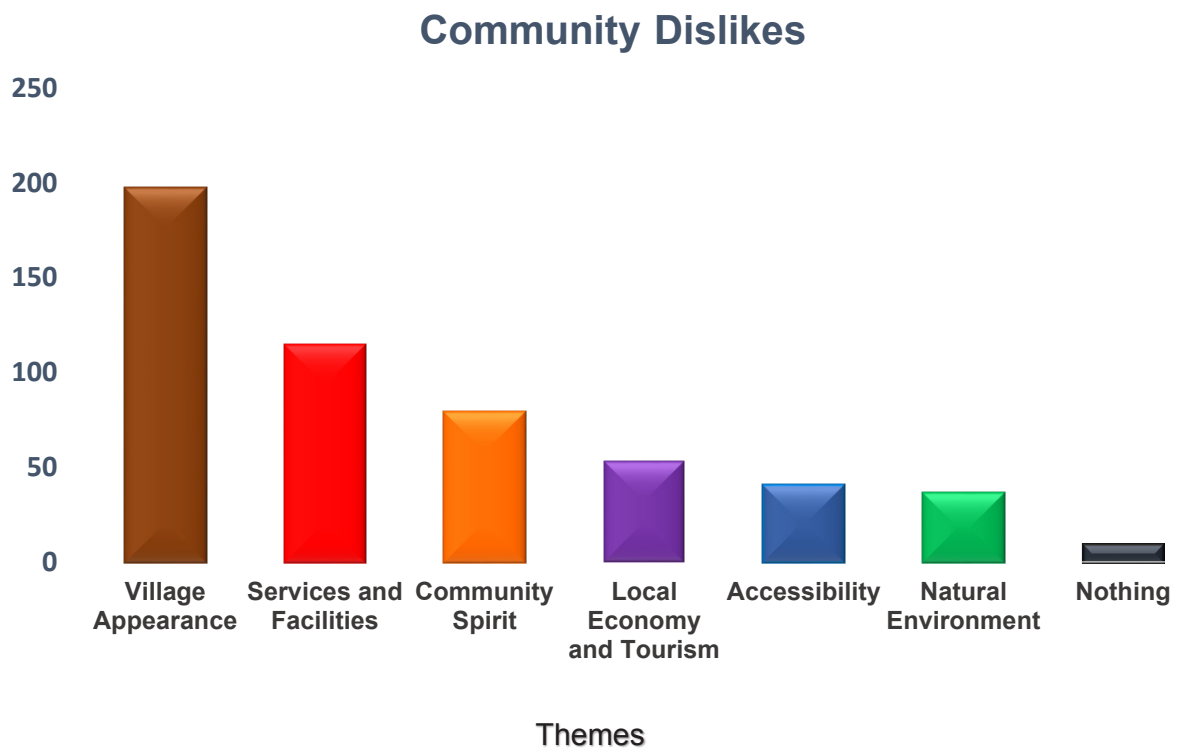
“Staying in a place with such history and heritage.”

“The community spirit at activities, especially the Christmas Lights and Catrine Amateurs.”

“The setting, scenery and surrounding areas.”



Dislikes



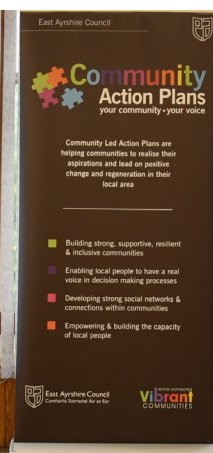
What people said:

“Catrine used to be known as the ‘Queen of the West’, just wish it could go back to its former glory.”

“The amount of litter and dog poo across our village, in particular areas of public use.”

“The state of derelict buildings and uninhabited buildings that just aren’t looked after.”

“The lack of things to do, meaning young people entertain themselves at the expense of others.”



Vision Statements

These statements have been prepared to summarise the main aspirations for the future as expressed by local people and organisations in their replies to survey and stakeholder interviews.

“A nice village where we all work together with more businesses up and running with more money coming into the village.”

“Cleaner, greener and more vibrant.”

“A tidy, close knit community that are keen to shop and spend time in Catrine, allowing it to flourish and thrive and encourage new residents and visitors.”

“More visually appealing, with old buildings refurbished and the village cleaner and a joy to walk through.”

“A pleasant, happy place in which to live and raise a family, with a clean environment and somewhere nice to go out for a meal and a drink.”

“A destination venue for tourists, with good facilities for the visitors.”

“Community minded, picturesque, a place where tourists would like to come to, a jewel of East Ayrshire.”

“A peaceful village to be proud of, where the history and culture of the village mattered.”

Community Priorities





Theme 1: Village Appearance

What?	How?
Clean up dog mess	<ul style="list-style-type: none"> • Hold regular clean-up events. • Conduct public information campaigns. • Increase awareness of the environmental problem caused by dog mess.
Regenerate buildings and gap sites	<ul style="list-style-type: none"> • Open conversations with property and land owners. • Explore options for re-imagining building and land use.
Tidy litter and more bins	<ul style="list-style-type: none"> • Hold regular cleaning events. • Increase the provision of litter bins throughout the village. • Conduct public information campaigns.
Improve Mill Square appearance	<ul style="list-style-type: none"> • Attract interest for aesthetic development.
Reduce vandalism	<ul style="list-style-type: none"> • Open conversations with Police Scotland. • Explore option of neighbourhood watch wardens.
Maintain hanging baskets	<ul style="list-style-type: none"> • Explore alternative funding streams. • Investigate different materials for less time consuming maintenance.

Who can help take these actions forward?

The above actions can only be met through working in partnership with various groups, services and individuals. We have identified stakeholders below who could assist with these actions.

Working with:

All Dog Owners
 Catrine PS Parent Council
 Catrine Community Trust
 East Ayrshire Woodlands
 Property Owners
 Local Businesses and Traders
 Central Scotland Green Network

EAC Environmental Health
 Auchinleck Academy
 Keep Scotland Beautiful
 Ayrshire Rivers Trust
 EAC Vibrant Communities
 EAC Waste Management
 Ward 7 Councillors

Catrine Primary School
 Catrine Community Council
 EAC Outdoor Amenities
 All Catrine Residents
 Historic Scotland
 Local MP and MSP



Theme 2: Services & Facilities

What?	How?
Keep village facilities open	<ul style="list-style-type: none"> Support use of existing community buildings to increase income streams and improve sustainability options. Support feasibility study and consultation on AM Brown Institute building searching for sustainable future.
Increased children and young people activities	<ul style="list-style-type: none"> Support and develop existing activities. Explore different ideas, venues and times for social and interest activities.
Improve housing condition and access	<ul style="list-style-type: none"> Improve aesthetics of existing housing stock. Provide suitable social housing which meets local need.
Increased community events	<ul style="list-style-type: none"> Support and develop existing events. Explore different ideas, venues and times for events.
Increased outdoor activities	<ul style="list-style-type: none"> Support and develop existing activities. Explore different ideas, venues and times for outdoor activities.
More older people activities	<ul style="list-style-type: none"> Support and develop existing activities. Explore different ideas, venues and times for social and interest activities.

Who can help take these actions forward?

The above actions can only be met through working in partnership with various groups, services and individuals. We have identified stakeholders below who could assist with these actions:

Working with:

Catrine Community Trust
 Catrine Community Council
 Sports Scotland
 Auchinleck Academy
 East Ayrshire Leisure Trust
 Shire Housing
 Ward 7 Councillors
 EAC Planning and Economic Development

Games Hall Sub-Committee
 EAC Housing
 EAC Waste Management
 Local Residents
 EA Tenants & Residents Federation
 Link Housing
 Health & Social Care Partnership

Institute Sub-Committee
 EAC Vibrant Communities
 Catrine Primary School
 Catrine PS Parent Council
 Atrium Housing
 Local MP and MSP



Theme 3: Local Economy

What?	How?
Reinstate services	<ul style="list-style-type: none"> Tackle impact of centralisation of services (post office, bank, health care). Open conversations with public and private sector.
Increased places to eat and socialise	<ul style="list-style-type: none"> Explore developing existing businesses. Encourage longer opening hours to better cater for the needs of the community. Open conversations with local businesses and traders.
Maximise tourism and facilities	<ul style="list-style-type: none"> Utilise the tourism on our doorstep. Develop a coordinated tourism campaign to highlight all that Catrine has to offer.
Enhanced employability options and projects	<ul style="list-style-type: none"> Encourage employment of local people in local businesses. Provide access to projects to make Catrine's residents employable.
Attract new business	<ul style="list-style-type: none"> Encourage local people to use local businesses. Encourage businesses back into Catrine.
Attract more investment	<ul style="list-style-type: none"> Market Catrine's best assets to visitors and businesses. Explore alternative funding streams.

Who can help take these actions forward?

The above actions can only be met through working in partnership with various groups, services and individuals. We have identified stakeholders below who could assist with these actions:

Working with:

Local Businesses and Traders
Ayrshire Chamber of Commerce
Catrine Community Trust
Business Gateway
EA Tenants & Residents Federation

Visit Scotland
Job Centre Plus
All Catrine Residents
EAC Planning and Economic Development
Local MP and MSP

Ward 7 Councillors
Catrine Community Council
Catrine House



Theme 4: Accessibility

What?	How?
Improve pavements and paths	<ul style="list-style-type: none"> • Develop links to other pedestrian and cycle networks. • Open discussions to resurface damaged paths.
Improve road surfacing	<ul style="list-style-type: none"> • Repair damaged road surfaces. • Prioritise areas for repair.
Increased parking	<ul style="list-style-type: none"> • Investigate alternative parking areas within the village. • Investigate current parking allocation.
Speed and HGV restrictions	<ul style="list-style-type: none"> • Research options for movement of traffic through the village. • Explore restrictions for farming and Heavy Goods Vehicles.
Enhanced public transport options	<ul style="list-style-type: none"> • Open discussions with external transport partners to offer a larger variety to Catrine residents. • Explore alternative methods of transport.
Improved infrastructure	<ul style="list-style-type: none"> • Propose safer walking routes to community hotspots and neighbouring towns and villages. • Discuss traffic calming methods and their benefits within village.

Who can help take these actions forward?

The above actions can only be met through working in partnership with various groups, services and individuals. We have identified stakeholders below who could assist with these actions:

Working with:

Catrine Community Council
 Central Scotland Green Network
 All Catrine Residents
 EAC Planning
 Community Planning Partnership
 Other local Community Action Plan groups

Ayrshire Roads Alliance
 Ayrshire Rivers Trust
 Local MP and MSP
 Economic Development
 Stagecoach and Scottish Passenger Transport
 Police Scotland
 EA Woodlands
 Ward 7 Councillors



Theme 5: Natural Environment

What?	How?
Clean river	<ul style="list-style-type: none"> • Hold regular clean-up events. • Conduct public information events.
Promote environmental heritage	<ul style="list-style-type: none"> • Utilise the areas and buildings of heritage within the village. • Develop a coordinated tourism campaign to highlight all that Catrine has to offer.
Clean up greenspaces	<ul style="list-style-type: none"> • Hold regular clean-up events. • Conduct public information events.
Tidy voes walk	<ul style="list-style-type: none"> • Hold regular clean-up events. • Maintain and preserve all natural riverside and woodland pathways and tracks.

Who can help take these actions forward?

The above actions can only be met through working in partnership with various groups, services and individuals. We have identified stakeholders below who could assist with these actions:

Working with:

All Dog Owners	EAC Environmental Health	Catrine Primary School
Catrine PS Parent Council	Auchinleck Academy	Catrine Community Council
Catrine Community Trust	Keep Scotland Beautiful	EAC Waste Management
EAC Outdoor Amenities	East Ayrshire Woodlands	Ayrshire Rivers Trust
All Catrine Residents	Local MP and MSP	Ward 7 Councillors
Property Owners	EAC Vibrant Communities	Historic Scotland
EAC Vibrant Communities	Ayrshire Chamber of Commerce	Catrine Environmental Group
Local Businesses and Traders	Central Scotland Green Network	
Coalfields Communities Landscape Partnership		
Coalfield Environmental Initiative		



Theme 6: Community Spirit

What?	How?
Improve community safety	<ul style="list-style-type: none"> • Increase police presence. • Target vandalism, crime and fly-tipping.
Re-establish community pride	<ul style="list-style-type: none"> • Promote and support community groups and events. • Celebrate the history and heritage of Catrine.
Increased community cohesion	<ul style="list-style-type: none"> • Be open and honest about who we are and what we want to achieve. • Promote coordinated working on actions within this Community Action Plan. • Encourage new people to get involved with local groups.
Promote community fundraising activities	<ul style="list-style-type: none"> • Explore the potential of Participatory Budgeting events. • Research alternative funding streams.

Who can help take these actions forward?

The above actions can only be met through working in partnership with various groups, services and individuals. We have identified stakeholders below who could assist with these actions:

Working with:

Catrine Community Council
 Institute Sub-Committee
 EAC Vibrant Communities
 Auchinleck Academy
 Parent Council
 All Catrine Residents

Games Hall Sub-Committee
 Catrine Community Trust
 Sports Scotland
 Local residents
 Police Scotland

EAC Housing
 EA Leisure Trust
 Local MP and MSP
 Catrine Primary School
 Ward 7 Councillors

Make It Happen





Working Together for Catrine

WORKING TOGETHER FOR CATRINE

Local groups and individuals will continue to work together to take forward the priorities within the Action Plan.

The projects listed here will need to be progressed by the local community and its community organisations with the support of a wide range of partners.

As a practical way of taking things forward the Steering Group are setting up Sub - Groups. If you are interested and want to become involved please get in touch with our contacts below:

Priority	Contact
Village Appearance	Sharon Sym 07809 406409
Services and Facilities	James Kleboe 07925 187953
Local Economy and Tourism	Gillian Davies gillian@documentsindesign.com
Accessibility	Sharon Whitehouse-Logan 07988 695812
Natural Environment	Tracy Smith tracy.smith753@tesco.net
Community Spirit	Karen Shirkie & Carol Clark 07946 421171



<https://www.facebook.com/catrineactionplan>
contact us: catrineactionplan@gmail.com



Thank You

This Action Plan is for the use of the whole community and is jointly owned by all organisations and individuals who have taken part in its preparation. We will be working together over the next 5 years to ensure its implementation.

The Steering Group would like to thank all those who took the time to share their views and to all who gave their time voluntarily to be part of the Steering Group.

Steering Group

Carol Clark, Gillian Davies, Iain McCulloch, James Kleboe, Karen Shirkie, Sharon Sym, Sharon Whitehouse-Logan and Tracy Smith.

Stakeholders

Atrium Housing, Bizzie Beez, Bloomin' Wonderful, Catrine Community Association, Catrine Community Council, Catrine Community Trust, Catrine House, Catrine Parish Church, Catrine Primary Parent Council, Catrine Primary School, Catrine Renewables, Daldorch House School, DK Hair, East Ayrshire Tenants and Residents Federation, Environmental Group, Icing on the Cake, KG Dance, Loch Lomond Group, Lucky House, Shire Housing, Scottish Assault Courses, St Andrews Ambulance Service, Tesco Community Champion, The Waggy Gang and Ward 7 Councillors.

Our apologies to any we have missed.

Photographs - Sharon Sym

Thanks to the Vibrant Communities Team of East Ayrshire Council who supported the Steering Group in carrying out all aspects of the work involved in preparing the plan.

For more information regarding Community Action Plans in East Ayrshire, please contact: vibrantcommunities@east-ayrshire.gov.uk



East Ayrshire Community Led Action Planning is based
on the Community Futures Programme designed and
supported by STAR Development Group
www.stardevelopmentgroup.org

