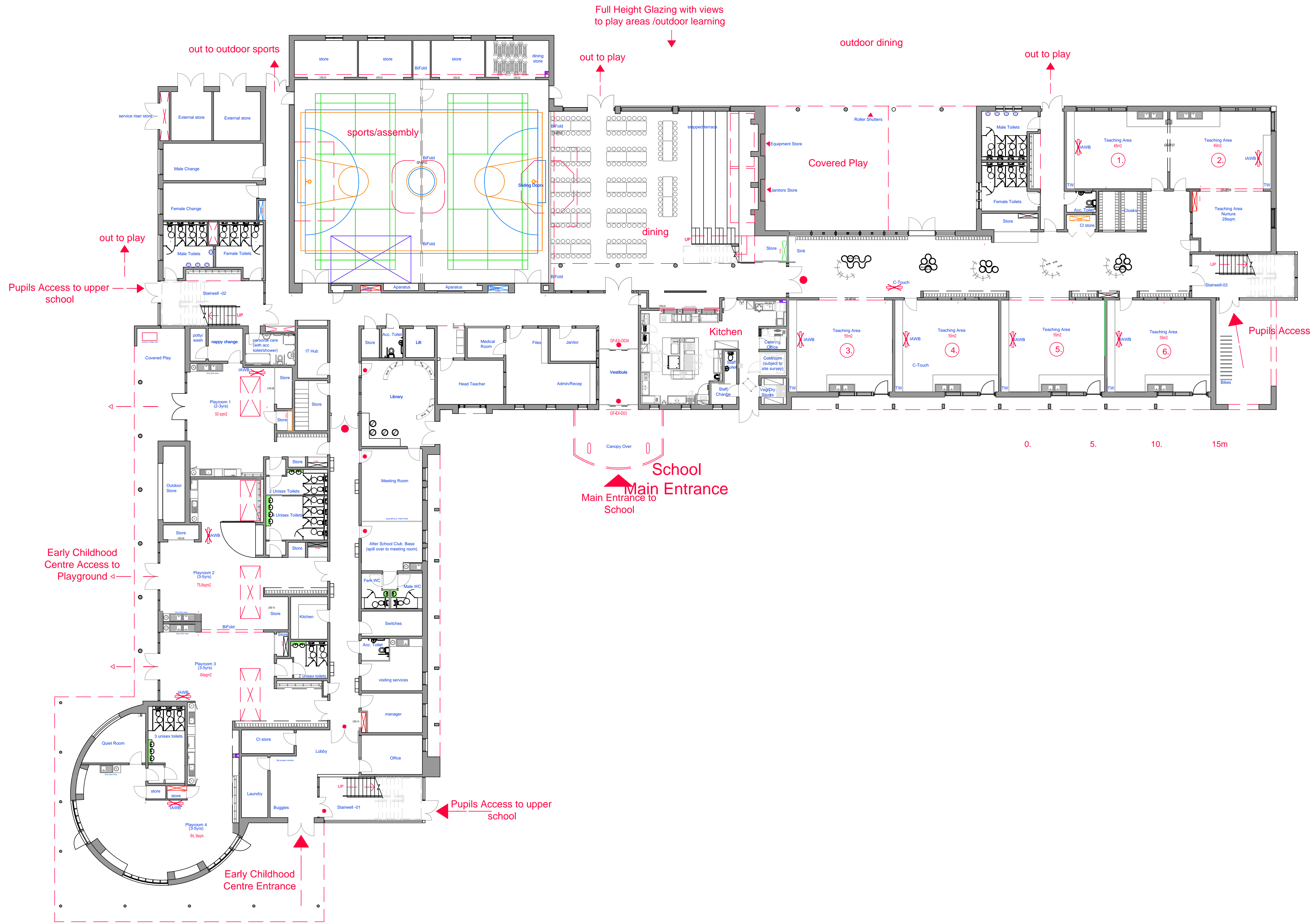


SIZE :
This drawing must not be scaled, only written dimensions to be respected.
Contractor must verify all necessary sizes & particulars on site prior to commencing work.

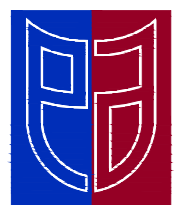
ELECTRICAL :
All electrical installations to comply with BS 7671 : 2008 (2011) IET Wiring Regulations in addition to East Ayrshire Council's electrical specification.

CDM :
The Principal Contractor will be required to comply with the requirements of the current CDM regulations on all projects, and will need to liaise with the Council's appointed CDM Co-ordinator on any HSE notifiable projects. Please note CDM is the responsibility of all persons in the Design & Construction process.

ASBESTOS :
No works to commence without an appropriate asbestos survey being in place.
Where materials are thought to contain asbestos, stop any work, keep all persons out of the area. Close, seal or lock off the area (where practicable) Do not remove any tools or materials. Inform the principal contractor who will contact the appropriate person within the council.
Specialist contractors must be appointed for the removal & disposal of asbestos.



| Rev | Description | Date | By |
|-----|-------------|------|----|
|-----|-------------|------|----|



East Ayrshire
COUNCIL

Safer Communities
Facilities & Property Management
Opera House
8 John Finnie Street
Kilmarnock
KA1 1DD
Tel : 01563 555248
Fax : 01563 555235
www.east-ayrshire.gov.uk

Project
PROPOSED NEW PRIMARY SCHOOL & ECC
KIRKSTYLE / BELLFIELD PS MERGE

Client
EDUCATION & SOCIAL SERVICES

Drawing Title
PROPOSED GROUND FLOOR PLAN

| Project File Ref | TF No. | Drawn by | Checked by |
|------------------|--------|----------|------------|
| 14-105-ED-NB | | JT | JT |
| Drawing Status | Date | Scale | |
| TENDER | FEB 15 | 1:150 | |

Dwg No. AL (2-) 003 Rev. A1