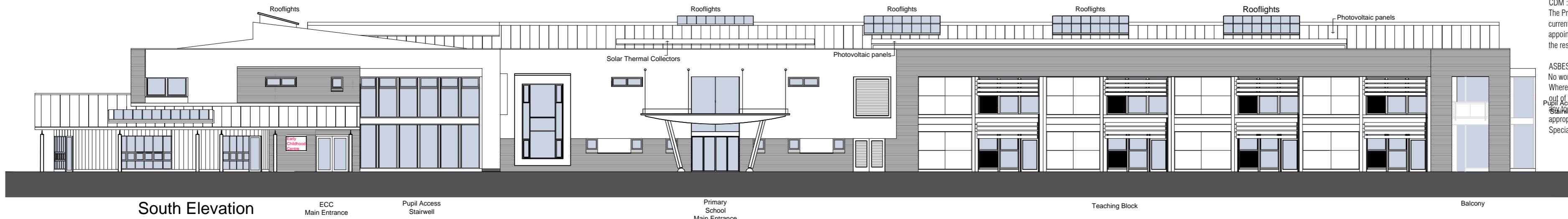


SIZING :
 This drawing must not be scaled, only written dimensions to be respected.
 Contractor must verify all necessary sizes & particulars on site prior to commencing work.

ELECTRICAL :
 All electrical installations to comply with BS 7671 : 2008 (2011) IET Wiring Regulations in addition to East Ayrshire Council's electrical specification.

CDM :
 The Principal Contractor will be required to comply with the requirements of the current CDM regulations on all projects, and will need to liaise with the Council's appointed CDM Co-ordinator on any HSE notifiable projects. Please note CDM is the responsibility of all persons in the Design & Construction process.

ASBESTOS :
 No works to commence without an appropriate asbestos survey being in place. Where materials are thought to contain asbestos, stop any work, keep all persons out of the area. Close, seal or lock off the area (where practicable) Do not remove asbestos or materials. Inform the principal contractor who will contact the appropriate person within the council. Specialist contractors must be appointed for the removal & disposal of asbestos.



South Elevation

ECC Main Entrance

Pupil Access Stairwell

Primary School Main Entrance

Teaching Block

Balcony

Outline Specification -

External Walls -
 Dark Facing Brick & Smooth White Render
 Trespa Meteor rainscreen cladding adjacent to PPC coated Aluminium Curtain Walling Glazing System.-RAL 7012

Galvanised Steel Brise Soleil to Southern & Eastern Elevations.

Main Entrance -
 Planar structural glass above automatic sliding doors.

Featured steel entrance canopy -galvanised steel frame, columns and stays.

External Columns - Galvanised Steel

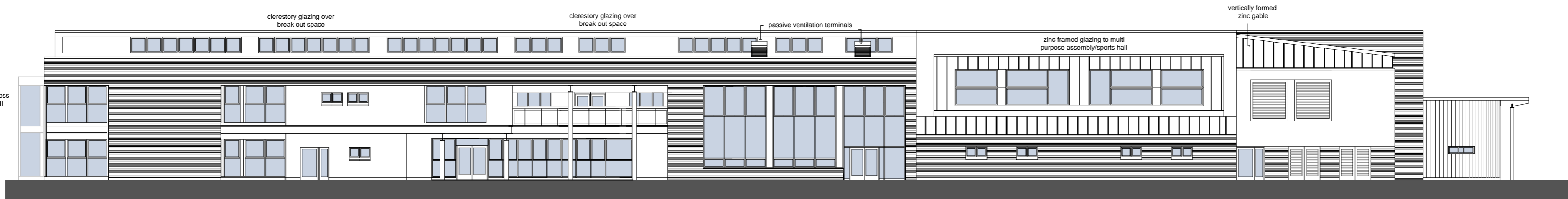
Windows -
 PPC Coated Aluminium D/glazed hermetically sealed units.-RAL 7012
 Opening Lights fully reversible with restrictors. Feature windows around building framed with 300mm Zinc surround.

Main Roof
 Zinc Coated Aluminium Standing Seam
 Roof Lights - Vitral stainless steel framed double glazed patent glazing -System A74 or equal.

Clerestory windows - double glazed hermetically sealed PPC aluminium-RAL 7012

All grilles & louvre vents to be PPC to match curtain walling, frame and windows-RAL 7012

For Colour Scheme refer to 3D Images



North Elevation

balcony over outdoor dining/covered play

Large North Facing Glazed Screen to dining area

Pupil Access Stairwell

clerestory glazing over break out space

clerestory glazing over break out space

passive ventilation terminals

zinc framed glazing to multi purpose assembly/sports hall

vertically formed zinc gable

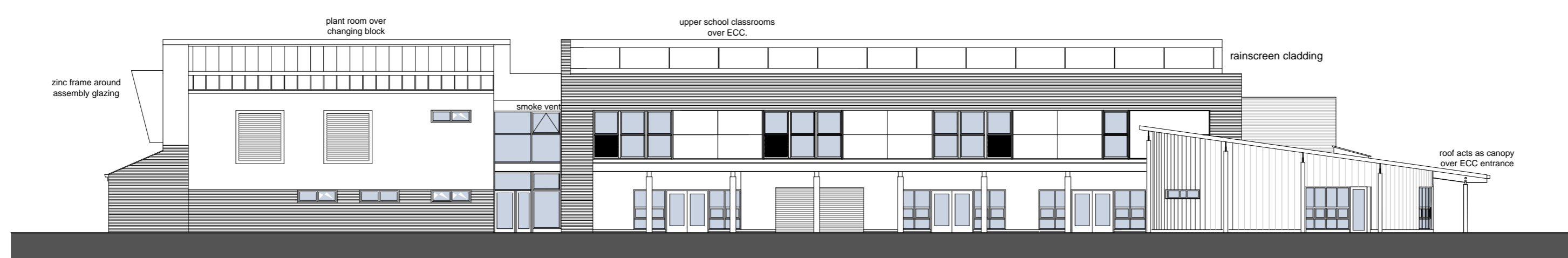


East Elevation

Pupil Access Stairwell

Library Access

Pupil Access Stairwell



West Elevation

access from playrooms to outdoor play

plant room over changing block

upper school classrooms over ECC.

rainscreen cladding

roof acts as canopy over ECC entrance

zinc frame around assembly glazing

smoke vent

Rev	Description	Date	By



East Ayrshire COUNCIL

Safer Communities

Facilities & Property Management
 Opera House
 8 John Finnie Street
 Kilmarnock
 KA1 1DD
 Tel : 01563 55248
 Fax : 01563 55235
 www.east-ayrshire.gov.uk

Project
**PROPOSED NEW PRIMARY SCHOOL & ECC
 KIRKSTYLE / BELLFIELD PS MERGE**

Client
EDUCATION & SOCIAL SERVICES

Drawing Title
PROPOSED ELEVATIONS

Project File Ref	TF No.	Drawn by	Checked by
14-105-ED-NB		JT	
Drawing Status	Date	Scale	
TENDER	APRIL 2015	1:200	

Dwg No.	Rev.	
AL(2)-002		A2