

A snapshot of Adult Support & Protection 2022 - 2024

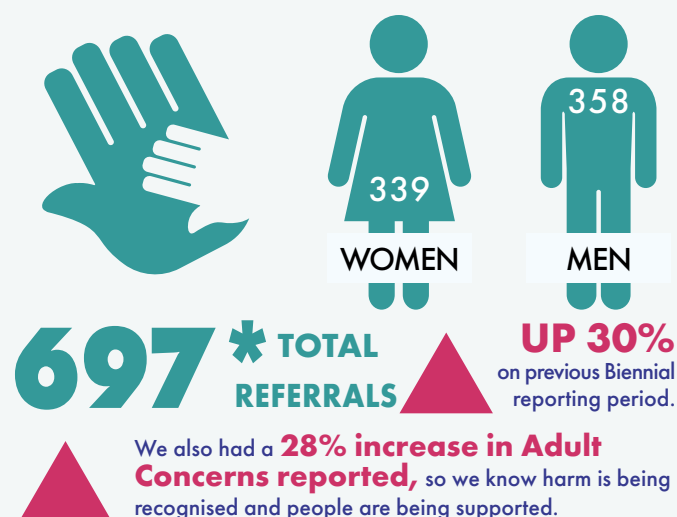


East Ayrshire Adult Protection Committee

Acting against harm

Protecting People Through Zero Tolerance of Harm

What we found...



Highest Categories of Harm:

32%	Physical Harm	▲
20%	Emotional/Psychological Harm	▲
15%	Self-Neglect	▼
12%	Financial/Material Harm	▲
10%	Self-Harm	▼
6%	Neglect & acts of omission by others	▼
5%	Sexual Harm	▼

Who is receiving support and protection



What we did 2020 - 2022

- Multi-Agency Audit of Adult Support and Protection told us that People do feel safer and have good outcomes. We learned that we still have work to do to improve how all our partners communicate about the positive and supportive nature of adult support and protection.
- Established a Lived Experience Project in partnership with East Ayrshire Independent Advocacy Services that listens and learns from the voices of people who have gone through adult protection processes
- We delivered our first Public Protection Conference which shared good practice, local resources and helped us have conversations about how we can promote the safeguarding of individuals, the workforce and communities
- Our Committee developed and publish a quarterly newsletter that everyone can access which highlights some of the partnership work that is happening across East Ayrshire.
- We continue to raise the spotlight on both self-neglect and sextortion, the two focuses of Adult Support and Protection Day in 2023 and 2024.

Local Adult Protection Priorities

2024 - 2026

- Build on our approach to raising awareness about the supportive nature of adult support and protection within services and communities
- We will review our EAAPC Improvement Plan ensuring it reflects the learning from our multi-agency audits in 2024 & 2025
- We will continue to embed and take forward learning and improvements from Learning Reviews
- The ASP workforce have access to ongoing learning opportunities at the right level

* Please note that the total referral figure for all localities within East Ayrshire is 667. 30 additional referrals relate to people who reside outwith East Ayrshire.

What can I do if I am worried?

Don't ignore it.

If you are worried that you or someone you know is being harmed; or is experiencing neglect, it is important to tell someone. That person can be a friend or a person you trust, or the contacts on this leaflet.

Do you need to give your name?

Any information you give will be treated with care. If you do not give your name, inquiries can still be made into the person's care and welfare.

Who can you tell?

If the person is in immediate danger, dial 999

Otherwise, contact your local social work services or you could speak to a health professional. They will all take your concerns seriously.

Social Work: Kilmarnock (including Annick & Irvine Valley) 01563 554200
Social Work: Southern (Cumnock/Doon Valley) 01290 427720
 Email: HSCPCustomerFirst@east-ayrshire.gov.uk

Ayrshire Out of Hours Social Work Service 0800 328 7758

Police Scotland (Non-Emergency) 101

Home Fire Safety visit 0800 0731 999 or text FIRE to 80800

Crimestoppers Report a crime anonymously 0800 555 111

NHS 24 - Freephone 111

East Ayrshire Independent Advocacy 01563 574442

East Ayrshire Carers Centre Kilmarnock 01563 571533
 Cumnock 01290 426404

3rd Party Reporting <http://www.scotland.police.uk/contact-us/hate-crime-and-third-party-reporting/>

For further information about Adults at Risk of Harm, Hate Crimes or Bogus Callers, visit www.east-ayrshire.gov.uk

Alternatively to invite someone to your group or organisation email HSCPASP@east-ayrshire.gov.uk

What we found in your area:



Cost of living

We realise that many people may be struggling with the increased cost of living at the moment and the impact this may be having on different aspects of everyday life.

[east-ayrshire.gov.uk/costofliving](https://www.east-ayrshire.gov.uk/costofliving)

wellbeing
in east ayrshire



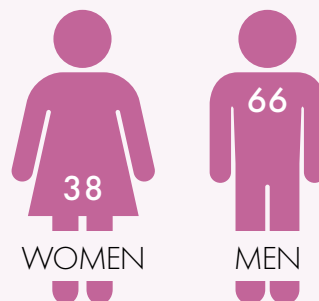
Visit our [wellbeing directory](https://www.east-ayrshire.gov.uk/SocialCareAndHealth/Wellbeing/Wellbeing.aspx) for more information and available supports

(<https://www.east-ayrshire.gov.uk/SocialCareAndHealth/Wellbeing/Wellbeing.aspx>)

Health & Social Care Partnership

Northern Locality

TOTAL REFERRALS: 104



- 22% Emotional/Psychological Harm
- 13% Financial/Material Harm
- 6% Neglect & Acts of Omission
- 27% Physical Harm
- 13% Self-Harm
- 15% Self-Neglect
- 4% Sexual Harm

Who is receiving support and protection



PEOPLE WITH A LEARNING DISABILITY



PEOPLE WITH A DISABILITY



PEOPLE WITH MENTAL HEALTH CONCERNS



RELATED TO ALCOHOL AND SUBSTANCES USE



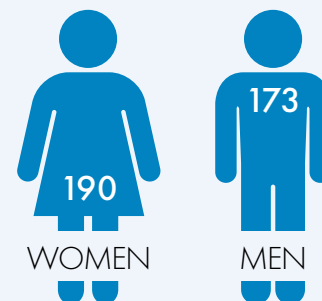
PEOPLE WITH DEMENTIA



Health & Social Care Partnership

Kilmarnock Locality

TOTAL REFERRALS: 363



- 19% Emotional/Psychological Harm
- 14% Financial/Material Harm
- 6% Neglect & Acts of Omission
- 33% Physical Harm
- 8% Self-Harm
- 15% Self-Neglect
- 5% Sexual Harm

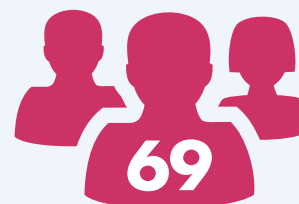
Who is receiving support and protection



PEOPLE WITH A LEARNING DISABILITY



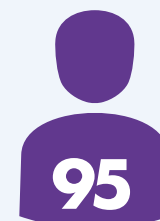
PEOPLE WITH A DISABILITY



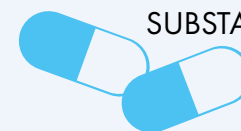
PEOPLE WITH MENTAL HEALTH CONCERNS



RELATED TO ALCOHOL AND SUBSTANCES USE



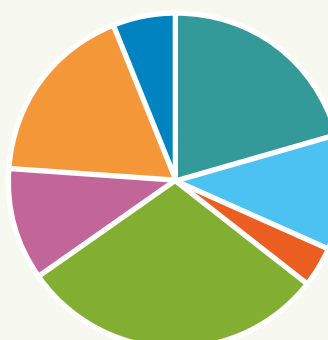
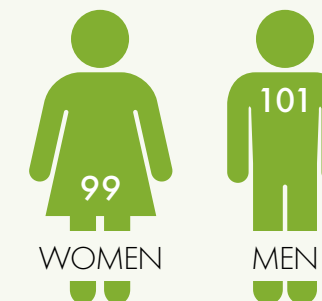
PEOPLE WITH DEMENTIA



Health & Social Care Partnership

Southern Locality

TOTAL REFERRALS: 200



- 21% Emotional/Psychological Harm
- 11% Financial/Material Harm
- 4% Neglect & Acts of Omission
- 30% Physical Harm
- 11% Self-Harm
- 18% Self-Neglect
- 6% Sexual Harm

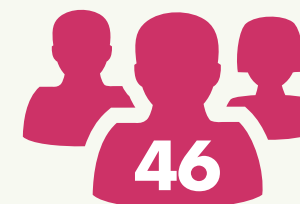
Who is receiving support and protection



PEOPLE WITH A LEARNING DISABILITY



PEOPLE WITH A DISABILITY



PEOPLE WITH MENTAL HEALTH CONCERNS



RELATED TO ALCOHOL AND SUBSTANCES USE



PEOPLE WITH DEMENTIA

