

# EAST AYRSHIRE by numbers



# Contents

The Council	3
Population & Households	3
Promoting Community Learning	6
Improving Opportunities	7
Improving Community Safety	11
Improving Health	11
Eliminating Poverty	17
Improving the Environment	18



# The Council

- Council Expenditure of £247million for 2003/04
- 32 Elected Members and approximately 6000 Employees
- 6 Council Departments
- 7 Central Council Committees
- 7 Local Council Committees providing grants totalling £180,000 to community groups
- 19 Local Council Offices including registration offices and 615 council properties.

Source: East Ayrshire Council, 2002

## Population and Households

### Locality Populations

	Total	Males	Females
<i>Auchinleck</i>	3,512	1,668	1,844
<i>Bellsbank</i>	1,619	757	862
<i>Catrine</i>	2,053	983	1,070
<i>Crosshouse</i>	2,454	1,165	1,289
<i>Cumnock</i>	9,358	4,476	4,882
<i>Dalmellington &amp; Burnton</i>	1,407	674	733
<i>Dalrymple</i>	1,281	606	675
<i>Darvel</i>	3,361	1,652	1,709
<i>Drongan</i>	3,012	1,423	1,589
<i>Dunlop</i>	839	416	423
<i>Fenwick</i>	863	398	465
<i>Galston</i>	5,000	2,372	2,628
<i>Hurlford &amp; Crookedholm</i>	4,968	2,307	2,661
<i>Kilmarnock</i>	43,588	20,710	22,878
<i>Kilmaurs</i>	2,601	1,241	1,360
<i>Logan</i>	1,333	641	692
<i>Mauchline</i>	4,105	1,999	2,106
<i>Muirkirk</i>	1,630	788	842
<i>New Cumnock</i>	3,165	1,480	1,685
<i>Newmilns</i>	3,057	1,520	1,537
<i>Patna</i>	2,179	1,033	1,146
<i>Stewarton</i>	6,582	3,155	3,427

N.B. Statistics for localities with population over 500

Source: General Register for Scotland (Census 2001), 2003

## Estimated Population by Age

Total Persons	East Ayrshire	% of Total Population	Scotland	% of Total Population
0 - 4	6,456	5.37	276,261	5.46
5 - 9	7,545	6.27	305,813	6.04
10 - 14	8,288	6.89	322,923	6.38
15 - 19	7,413	6.16	317,605	6.27
20 - 24	6,235	5.18	315,395	6.23
25 - 29	7,159	5.95	314,885	6.22
30 - 34	9,067	7.54	381,237	7.53
35 - 39	9,486	7.88	403,232	7.96
40 - 44	8,814	7.33	378,888	7.48
45 - 49	7,848	6.52	338,208	6.67
50 - 54	8,832	7.34	350,883	6.93
55 - 59	7,267	6.04	290,138	5.73
60 - 64	6,520	5.42	261,551	5.16
65 - 69	5,940	4.94	239,464	4.73
70 - 74	4,912	4.08	207,178	4.09
75 - 79	3,944	3.28	165,616	3.27
80 - 84	2,566	2.13	106,129	2.10
85 - 89	1,380	1.15	59,409	1.17
90 & over	638	0.53	29,385	0.58
<b>Total</b>	<b>120,310</b>		<b>5,064,200</b>	

Source: General Register for Scotland (June 2001 Mid Year Estimates, based on Census 2001), 2002

## Ethnic Grouping

Ethnic Groups	East Ayrshire (%)	Scotland (%)
<i>White Scottish</i>	94.22	88.09
<i>Other White British</i>	3.94	7.38
<i>White Irish</i>	0.57	0.98
<i>Other White</i>	0.59	1.54
<i>Indian</i>	0.07	0.30
<i>Pakistani</i>	0.15	0.63
<i>Bangladeshi</i>	0.00	0.04
<i>Other South Asian</i>	0.04	0.12
<i>Chinese</i>	0.18	0.32
<i>Caribbean</i>	0.01	0.04
<i>African</i>	0.02	0.10
<i>Black Scottish or Other Black</i>	0.01	0.02
<i>Any Mixed Background</i>	0.15	0.25
<i>Other Ethnic Group</i>	0.05	0.19

Source: General Register for Scotland (Census 2001), 2003

## Births & Deaths

<i>Live Births, 2001</i>	1,198	
<i>Total Deaths, 2001</i>	1,507	
	<b>East Ayrshire</b>	<b>Scotland</b>
<i>Birth Rate (per 1000 population)</i>	10.5	10.4
<i>Death Rate (per 1000 population)</i>	12.5	11.3

Source: General Register for Scotland (Scotland's Population 2001), 2002

## Population Estimates & Projections

2000	
Total Population	
<i>East Ayrshire</i>	120,120
<i>Scotland</i>	5,062,940

2006		
	Total Population	% Change from 2000
<i>East Ayrshire</i>	117,304	-2.34
<i>Scotland</i>	5,023,000	-0.79

2011		
	Total Population	% Change from 2000
<i>East Ayrshire</i>	113,980	-5.11
<i>Scotland</i>	4,983,000	-1.58

2016		
	Total Population	% Change from 2000
<i>East Ayrshire</i>	110,464	-8.04
<i>Scotland</i>	4,943,000	-2.37

Source: General Register for Scotland (2001 Rebased Population Projections - Interim Report), November 2002

## Council Tax Banding

Category	Total Properties
<i>Band A</i>	27,305
<i>Band B</i>	9,560
<i>Band C</i>	4,022
<i>Band D</i>	5,005
<i>Band E</i>	4,720
<i>Band F</i>	1,934
<i>Band G</i>	401
<i>Band H</i>	36
<i>Total number of properties on the Council Tax List</i>	52,983

Source: East Ayrshire Council, September 2002

## Households

Household composition	East Ayrshire	Scotland
<i>Total number of households (with residents)</i>	50,346	2,192,246
<i>% one person household - pensioner</i>	15.33	14.98
<i>% one person household - other</i>	13.73	17.90
<i>% lone parent household - with dependent children</i>	6.75	6.91
<i>% lone parent household - all children non-dependent</i>	3.79	3.59
<i>% married couple household - with dependent children</i>	18.26	16.76
<i>% married couple household - with no dependent children</i>	21.75	19.33
<i>% cohabiting couple household - with dependent children</i>	3.55	2.71
<i>% cohabiting couple household - with no dependent children</i>	4.02	4.15
<i>% multi-person household - all student</i>	0.01	0.56
<i>% multi-person household - all pensioner</i>	8.78	8.51
<i>% other households</i>	4.03	4.6

Source: General Register for Scotland (Census 2001), 2003

## Household Projections 2000 - 2014

Year	Households	Year	Households
2000	51,080	2008	52,680
2001	51,310	2009	52,860
2002	51,490	2010	53,020
2003	51,670	2011	53,180
2004	51,850	2012	53,340
2005	52,060	2013	53,490
2006	52,260	2014	53,630
2007	52,470		

Source: Scottish Executive, 2002

## Promoting Community Learning

### Pupil Numbers

	99/00	00/01	01/02	02/03
<i>Primary Schools</i>	10,973	10,832	10,600	10,356
<i>Secondary Schools</i>	8,007	8,028	8,065	8,110

## Community Learning

- Average of 13,000 school lets each year to promote community access
- Family learning opportunities in all primary schools
- Approximately 1000 certificates presented to learners in 2002
- 238 learners assisted with adult literacy and numeracy skills in 2001/02
- Approximately 100 community organisations offered support in 2002

## Community Empowerment

- 18 Members of the Scottish Youth Parliament in 2003

## Volunteering

- 89 essential skills volunteers in the community in 2001/02

## Libraries

Total number of Libraries 23

Total number of Mobile Resources 2

Source: East Ayrshire Council, 2002

## Improving Opportunities

### Attainment Rates – East Ayrshire Average (%)

Primary Schools		98/99	99/00	00/01	01/02
Reading	East Ayrshire	70.0	75.1	77.7	77.5
	Scotland	70.0	76.1	79.8	81.0
Writing	East Ayrshire	60.0	64.8	70.4	69.8
	Scotland	56.0	66.5	70.3	72.5
Mathematics	East Ayrshire	76.0	76.6	80.6	78.4
	Scotland	78.3	78.3	79.2	80.0
Secondary Schools		98/99	99/00	00/01	01/02
Reading	East Ayrshire	36.0	50.3	53.7	58.4
	Scotland	41.0	53.1	56.4	58.9
Writing	East Ayrshire	33.0	37.7	42.1	46.3
	Scotland	36.0	43.5	45.9	49.8
Mathematics	East Ayrshire	51.0	55.5	62.4	62.5
	Scotland	42.0	46.7	51.2	53.6

## School Leaver Destinations

% Leavers into:

<i>Higher Education</i>	33.0
<i>Further Education</i>	20.0
<i>Training</i>	13.0
<i>Employment</i>	19.0
<i>Unemployment</i>	15.0

Source: Ayrshire Careers Partnership Limited, 2001/02

## Unemployment Rate - March 2003

	East Ayrshire (%)	Scotland (%)
<i>Total</i>	7.84	4.28
<i>Total Males</i>	11.20	7.85
<i>Total Females</i>	4.12	2.16

Source: Office for National Statistics, March 2003

## Economic Activity

(% of all people aged 16-74)

	East Ayrshire	Scotland
<i>All persons aged 16-74</i>	87,811	3,731,079
<b>Economically active (%)</b>		
<i>Employees - Part time</i>	11.28	11.12
<i>Employees - Full time</i>	38.07	40.26
<i>Self-employed</i>	6.27	6.60
<i>Unemployed</i>	5.47	3.97
<i>Full-time student</i>	2.24	3.03
<b>Economically inactive (%)</b>		
<i>Retired</i>	14.68	13.90
<i>Student</i>	3.30	4.28
<i>Looking after home/family</i>	6.27	5.51
<i>Permanently sick/disabled</i>	8.35	7.44
<i>Other</i>	4.07	3.89

Source: General Register for Scotland (Census 2001), February 2003

## Childcare Places

- *Over 2,680 pre-school education places, including 229 which offer both care and education*
- *Approximately 200 childcare places, 0 - 3 years*
- *Approximately 600 childminding places, 0 - 12 years*
- *1580 sessional out of school care places*

Source: East Ayrshire Council / Ayrshire Childcare Information Service, May 2003

## Employment by Industry Sector

(% of all people aged 16 - 74 in employment)

Industry	East Ayrshire (%)	Scotland (%)
<i>Agriculture, Hunting &amp; Forestry</i>	3.25	2.14
<i>Fishing</i>	0.06	0.30
<i>Mining &amp; Quarrying</i>	0.92	1.24
<i>Manufacturing</i>	19.35	13.23
<i>Electricity, Gas &amp; Water Supply</i>	0.94	1.00
<i>Construction</i>	8.70	7.48
<i>Wholesale, Retail Trade &amp; Repair of Motor Vehicles</i>	15.34	14.39
<i>Hotels &amp; Catering</i>	4.25	5.74
<i>Transport, Storage &amp; Communication</i>	6.33	6.70
<i>Financial Intermediation</i>	2.59	4.64
<i>Real Estate, Renting &amp; Business Activities</i>	8.28	11.17
<i>Public Administration &amp; Defence</i>	6.77	6.99
<i>Education</i>	5.40	7.30
<i>Health &amp; Social Work</i>	13.39	12.37
<i>Other</i>	4.43	5.31

Source: General Register for Scotland (Census 2001), February 2003

## Largest Employers (over 250 employees)

<i>Ayrshire &amp; Arran NHS Board</i>	Health
<i>Asda Stores Ltd</i>	Retail
<i>Halifax Bank of Scotland (HBOS)</i>	Financial Services
<i>Diageo Scotland Ltd</i>	Whisky Distribution
<i>East Ayrshire Council</i>	Local Authority
<i>Food Partners Kilmarnock Ltd</i>	Food Products
<i>Glacier Vandervell</i>	Engineering
<i>Kilmarnock College</i>	Education
<i>Land Engineering (Scotland) Ltd</i>	Civil Engineering
<i>Royal Mail</i>	Postal Services
<i>Safeway plc</i>	Retail
<i>Stoddard International plc</i>	Textiles
<i>The Royal Bank of Scotland plc</i>	Financial Services

Source: Ayrshire Chamber of Commerce, November 2002

## Employment by Status (% of total persons aged 16-74 in employment)

	Working as									
	All People aged 16-74 in employment	Managers & Senior Officials	Professional Occupations	Associate Professional & Technical Occupations	Administrative and Secretarial Occupations	Skilled Trades Occupations	Personal Service Occupations	Sales & Customer Service Occupations	Process, Plant & Machine Operatives	Elementary Occupations
East Ayrshire	50,503	10.34	7.80	12.10	11.21	15.01	7.80	8.34	13.36	14.04
Scotland	2,261,281	12.17	10.84	13.98	12.73	12.18	7.14	8.64	9.65	12.67

## Travel to Work or Study (% of all people aged 16-74 in employment or studying)

Council Area	All people aged 16-74 in employment or studying	Work or study mainly at or from home	Travel to place of work or study by										Average distance (km) travelled to place of work or study	Percentage of public transport users in households <sup>2</sup>	
			Underground, metro, light rail, train	Train	Bus, minibus or coach	Motorcycle, scooter or moped	Driving a car or van	Passenger in a car or van	Taxi or minicab	Bicycle	On foot	Other <sup>1</sup>		With car or van	Without car or van
East Ayrshire	55,590	5.78	0.03	2.16	11.95	0.30	56.05	10.64	0.44	0.46	11.54	0.65	-	70.13	29.87
Scotland	2,510,494	6.07	0.43	3.45	13.95	0.46	50.03	8.29	0.77	1.44	14.07	1.04	-	63.18	36.82

<sup>1</sup> Excludes working or studying at home, no fixed place, working at offshore installation, working or studying outside the UK.

<sup>2</sup> Public transport includes underground, metro, light rail, tram, train, bus, minibus or coach.

Source: General Register for Scotland (Census 2001), February 2003

# Improving Community Safety

## Crime

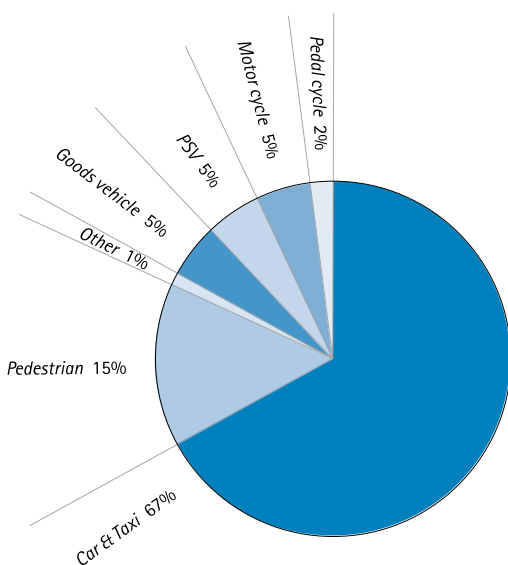
Crimes made known to Police 2001/02	Number	(%)
<i>Crimes against the person</i>	654	6.50
<i>Crimes of indecency</i>	122	1.20
<i>Crimes involving dishonesty</i>	5,817	57.40
<i>Crimes involving vandalism</i>	2,299	22.70
<i>Miscellaneous crimes</i>	1,241	12.20
<i>Total crimes</i>	10,133	100.00

Source: Strathclyde Police Public Performance Report, 2001/02

## Road Accidents - 2002

<i>Fatal</i>	11
<i>Serious</i>	81
<i>Slight</i>	335

### Casualties by Road User Group



Source: East Ayrshire Council, 2003

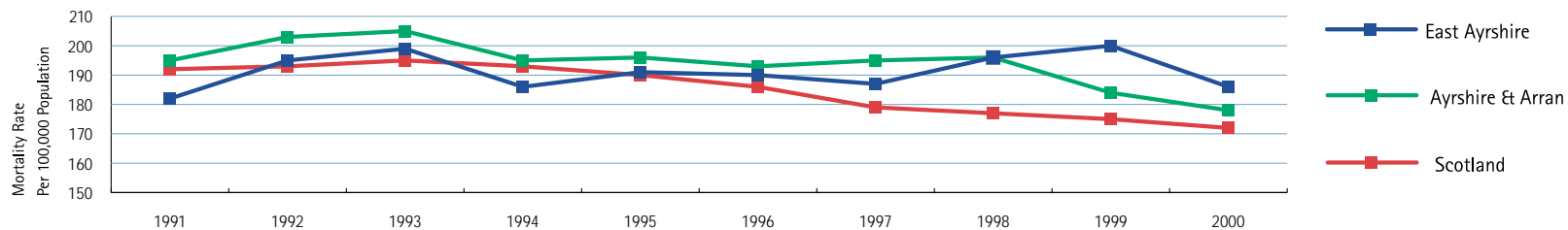
## Improving Health

Total number of GP Practices 16

## Hospitals

<i>Crosshouse Hospital</i>	Kilmarnock
<i>East Ayrshire Community Hospital</i>	Cumnock
<i>Strathlea Resource Centre</i>	Kilmarnock
<i>Holmhead Hospital</i>	Cumnock
<i>Kirklandside Hospital</i>	Kilmarnock

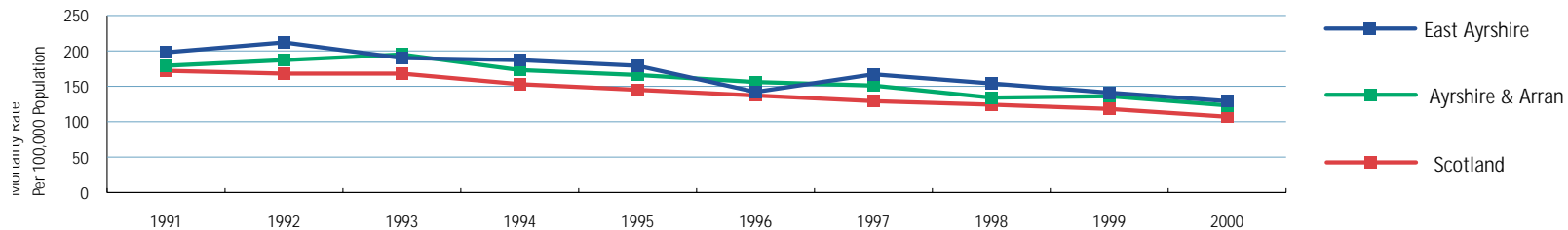
## Deaths due to Cancer, under 75 years



Crude rate per 100,000 Population		1991	1992	1993	1994	1995	1996	1997	1998	1999	2000	1991-2000 Total	Annual Average
Cancer	<i>East Ayrshire</i>	182	195	199	186	191	190	187	196	200	186	1912	191
	<i>Ayrshire &amp; Arran</i>	195	203	205	194	196	193	195	196	184	178	1939	194
	<i>Scotland</i>	192	193	195	193	190	186	179	177	175	172	1852	185

Source: Ayrshire & Arran NHS Board (Registrar General for Scotland, 2000), January 2002

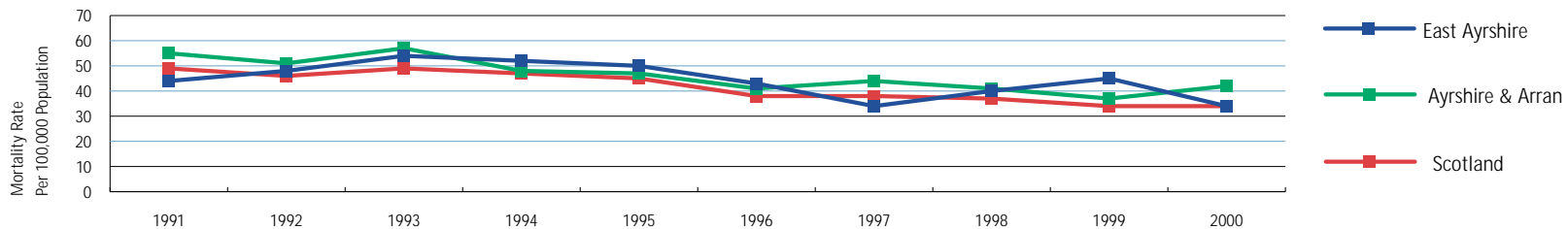
## Deaths due to Heart Disease, under 75 years



Crude rate per 100,000 Population		1991	1992	1993	1994	1995	1996	1997	1998	1999	2000	1991-2000 Total	Annual Average
Heart Disease	<i>East Ayrshire</i>	198	212	190	187	179	142	167	154	141	129	1699	170
	<i>Ayrshire &amp; Arran</i>	179	187	195	173	166	156	151	134	136	123	1600	160
	<i>Scotland</i>	172	168	168	151	145	137	129	124	118	107	1419	142

Source: Ayrshire & Arran NHS Board (Registrar General for Scotland, 2000), January 2002

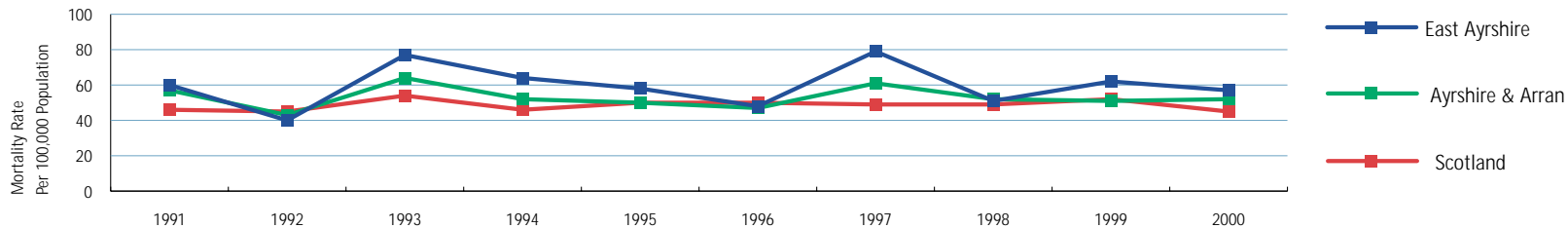
## Deaths due to Stroke, under 75 years



Crude rate per 100,000 Population		1991	1992	1993	1994	1995	1996	1997	1998	1999	2000	1991-2000 Total	Annual Average
Stroke	<i>East Ayrshire</i>	44	48	54	52	50	43	34	40	46	34	445	44
	<i>Ayrshire &amp; Arran</i>	55	51	57	48	47	41	44	41	37	42	463	46
	<i>Scotland</i>	49	46	49	47	46	38	38	37	34	34	418	42

Source: Ayrshire & Arran NHS Board (Registrar General for Scotland, 2000), January 2002

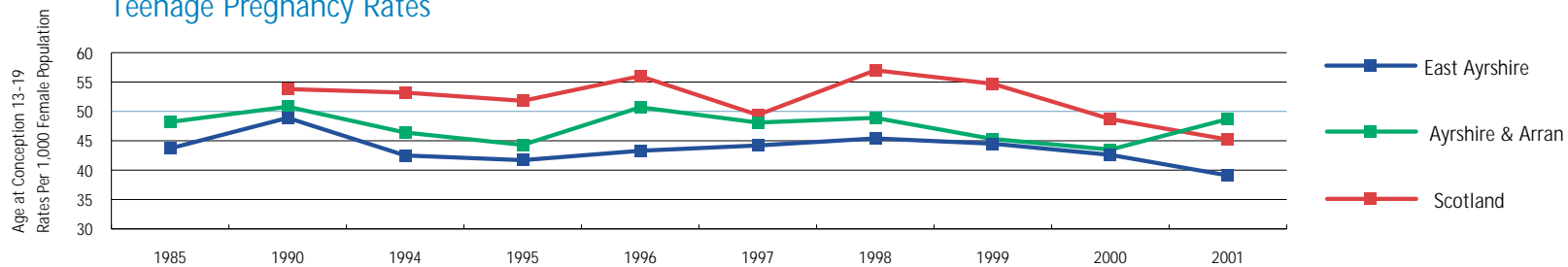
## Deaths due to Respiratory Disease, under 75 years



Crude rate per 100,000 Population		1991	1992	1993	1994	1995	1996	1997	1998	1999	2000	1991-2000 Total	Annual Average
Respiratory Disease	<i>East Ayrshire</i>	60	41	77	64	58	48	79	51	62	57	597	60
	<i>Ayrshire &amp; Arran</i>	57	43	64	52	50	47	61	52	51	52	529	53
	<i>Scotland</i>	46	45	54	47	50	50	49	49	53	45	488	49

Source: Ayrshire & Arran NHS Board (Registrar General for Scotland, 2000), January 2002

## Teenage Pregnancy Rates



Year of Discharge		1985	1990	1994	1995	1996	1997	1998	1999	2000	2001
Age at Conception 13-19	<i>East Ayrshire</i>		53.8	53.2	51.8	56.0	49.4	57.0	54.7	48.7	45.2
Crude rate per 1,000	<i>Ayrshire &amp; Arran</i>	48.2	50.8	46.4	44.3	50.7	48.1	48.9	45.3	43.5	48.7
Female Population	<i>Scotland</i>	43.7	48.9	42.5	41.7	43.3	44.2	45.4	44.5	42.6	39.1

Source: Ayrshire & Arran NHS Board (ISD Scotland), January 2002

# Eliminating Poverty

## Benefits Receipt - May 2002

<i>Council Tenants in receipt of Housing Benefit</i>	9,232
<i>Private/Social Sector Tenants in receipt of Housing Benefit</i>	2,848
<i>Total Residents in receipt of Council Tax Benefit</i>	13,933

Source: East Ayrshire Council, January 2003

## Local Authority Average Weekly Rent

<i>East Ayrshire</i>	£36.89
<i>Scotland</i>	£41.02

Source: Scottish Executive (Housing Trends in Scotland), September 2002

## Free School Meals

% of pupils receiving free school meals

	99/00	00/01	01/02
<i>Primary Schools</i>	23.5	23.3	22.5
<i>Secondary Schools</i>	18.4	18.0	17.5

Source: East Ayrshire Council, 2002

## Clothing & Footwear Grants

% of pupils receiving clothing & footwear grants

	99/00	00/01	01/02
<i>Primary Schools</i>	42.4	39.8	40.7
<i>Secondary Schools</i>	33.6	33.2	18.1

Source: East Ayrshire Council, 2002

## Car/Van Ownership

Cars/Vans Ownership	East Ayrshire	Scotland
<i>Total number of households (with residents)</i>	50,346	2,192,246
<i>% no car or van</i>	33.49	34.23
<i>% 1 car or van</i>	44.08	43.34
<i>% 2 cars or vans</i>	18.57	18.62
<i>% 3 or more cars or vans</i>	3.86	3.81

Source: General Register for Scotland (Census 2001), 2003

## Allowances/Claimants

	East Ayrshire		Scotland	
	February 02	August 02	February 02	August 02
<i>Income Support</i> (per 1,000 population 16+)	116	116	102	104
<i>Incapacity Benefit</i> (per 1,000 population 16-59/64)	100	102	91	92
<i>Attendance Allowance</i> (per 1,000 population 65+)	191	187	160	160
<i>Job Seekers Allowance</i> (per 1,000 population 16-59/64)	54	51	36	34
<i>Council Tax Benefit</i> (per 1,000 population 18+)	149	146	134	133
<i>Housing Benefit</i> (per 1,000 population 16+)	127	124	111	109

Source: Scottish Executive (Benefits and Tax Credits in Scotland – Reports for February 2002 and August 2002), October 2002

## Improving the Environment

### Land Area

<i>Total</i>	127,033 Ha.		
<i>Rural</i>	123,243 Ha.	<i>Urban</i>	3,790 Ha.
	97.0%		3.0%

### Conservation

<i>Total number of Conservation Areas</i>	24
<i>Total number of Listed Buildings</i>	706
<i>Total number of Sites of Scientific Interest</i>	19
<i>Total number of Provisional Wildlife Sites</i>	111

### Planning Applications by Type - 2002

<i>Total number of Applications received</i>	998
<i>Total number of Applications determined</i>	837
<i>Householder</i>	355
<i>Business &amp; Industry</i>	104
<i>Housing</i>	143

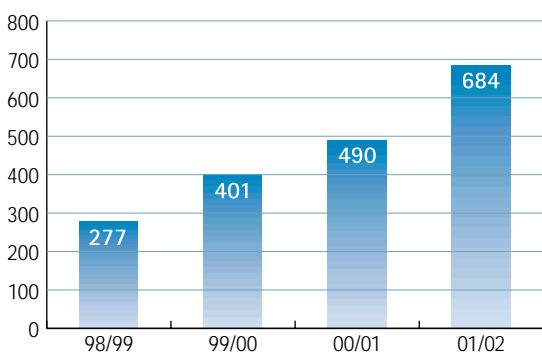
### Building Warrants - 2002

<i>Total number of Building Warrants</i>	1229
<i>Total cost of Building Warrant Works</i>	£52,069,360

## Shopping Floorspace/Catchments

	Convenience (food)	Comparison (non-food)
<i>Catchment Population</i>	83,550	83,850
<i>Available Expenditure (£m)</i>	101	170
<i>Potential Turnover (£m)</i>	139	152
<i>Potential Balance (£m)</i>	-38	18

## Construction of New Dwellings



Source: East Ayrshire Council, 2002

## Housing Tenure - 31 March 2002

<i>Owner Occupied</i>	30,961
<i>Local Authority</i>	16,816
<i>Registered Social Landlords</i>	3,053
<i>Private Rented</i>	1,688
<i>Other</i>	804
<i>Total Housing Stock</i>	53,322

## Council House Sales - 31 March 2003

<i>Total number of completed Council House Sales (since Right to Buy, 1980)</i>	10,983
---	--------

Source: East Ayrshire Council, 2002



Compiled by:  
Planning & Building Control Division  
Development Services  
EAST AYRSHIRE COUNCIL  
[planning@east-ayrshire.gov.uk](mailto:planning@east-ayrshire.gov.uk)

At the time of production our Core Community Planning Partners are:



**Strathclyde  
Fire  
Brigade**



**STRATHCLYDE  
POLICE**